

# AMPD1-Specific antibody



Catalog Number: 108001

## Product name

AMPD1-Specific antibody

## Specificity

human, mouse, rat; other species not tested.

## Antibody description

AMPD1-Specific Rabbit Polyclonal antibody.  
Positive WB detected in mouse skeletal muscle tissue. Observed molecular weight by Western-blot: 75-83kd

## Preparation

This antibody was obtained by immunization of Peptide (Accession Number: NM\_000036).  
Purification method: Antigen affinity purified.

## Formulation

PBS with 0.02% sodium azide and 50% glycerol pH 7.3.

## Storage

Store at -20°C. DO NOT ALIQUOT

## Clonality

Polyclonal

## Ig Type

Rabbit IgG

## Applications

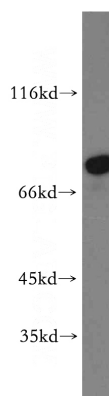
ELISA, WB

## Dilutions

Recommended Dilution:

WB: 1:500-1:5000

## Validations



mouse skeletal muscle tissue were subjected to SDS PAGE followed by western blot with Catalog No:108001(AMPD1-Specific antibody) at dilution of 1:300