

Anti-Phospho-mTOR (Ser2448) Rabbit antibody



Catalog Number: 167001

Product name

WB, IHC-P

Anti-Phospho-mTOR (Ser2448) Rabbit antibody

Dilutions

Specificity

1:500~1:1000

Human, Mouse, Pig

1:50~1:100

Antibody description

Phospho-mTOR (Ser2448) Rabbit polyclonal antibody

Validations

Preparation

Antigen: A synthesized peptide derived from human Phospho-mTOR (S2448)

Formulation

Rabbit IgG in phosphate buffered saline , pH 7.4, 150mM NaCl, 0.02% sodium azide and 50% glycerol.

Storage

Store at +4°C short term. Store at -20°C long term. Avoid freeze / thaw cycle.

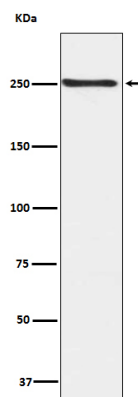
Clonality

Polyclonal

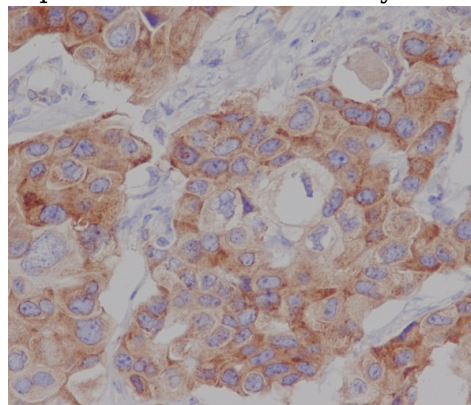
Ig Type

Rabbit IgG

Applications



Western blot analysis of Phospho-mTOR (S2448) expression in HEK293 cell lysate.



Immunohistochemical analysis of paraffin-embedded human breast cancer, using Phospho-mTOR (S2448) Antibody.