

# Anti-GPR157 antibody



Catalog Number: 176001

## Product name

Anti-GPR157 antibody

## Specificity

Human

## Antibody description

Rabbit polyclonal antibody to GPR157

## Preparation

This antigen of this antibody was the antiserum was produced against synthesized peptide derived from human gpr157. aa range:81-130

## Formulation

Liquid, Liquid in PBS containing 50% glycerol, 0.5% BSA and 0.02% sodium azide.

## Storage

Store at +4°C after thawing. Aliquot store at -20°C or -80°C. Avoid repeated freeze / thaw cycles.

## Clonality

Polyclonal

## Ig Type

Rabbit IgG

## Applications

WB, IF

## Dilutions

WB: 1:500-1:2000

IF: 1:100-1:500

## Validations

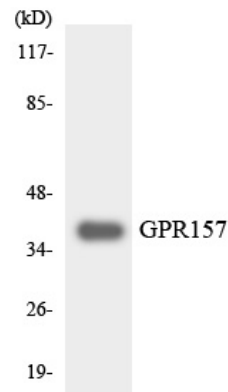


Fig1:: Western blot analysis of GPR157 on RAW264.7 cell lysates. Proteins were transferred to a PVDF membrane and blocked with 5% BSA in PBS for 1 hour at room temperature. The primary antibody ( 1/500) was used in 5% BSA at room temperature for 2 hours. Goat Anti-Rabbit IgG - HRP Secondary Antibody (HA1001) at 1:5,000 dilution was used for 1 hour at room temperature.

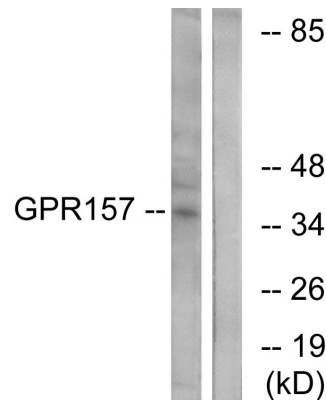
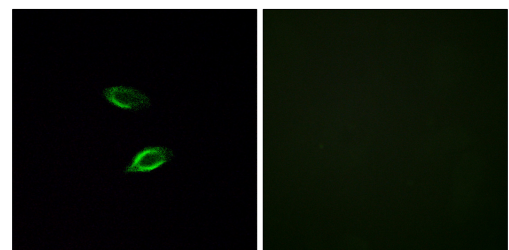


Fig2:: Western blot analysis of lysates from NIH/3T3 cells, using GPR157 Antibody. The lane on the right is blocked with the synthesized



peptide.

Fig3:: Immunofluorescence analysis of HUVEC cells, using GPR157 Antibody. The picture on the

# Anti-GPR157 antibody



Catalog Number: 176001

---

right is blocked with the synthesized peptide.