

Anti-S100A16 antibody



Catalog Number: 104001

Product name

Anti-S100A16 antibody

Immunogen

[Human S100A16 recombinant protein](#)

Specificity

Human S100A16

Antibody description

Rabbit polyclonal to S100A16

Preparation

Produced in rabbits immunized with purified, recombinant Human S100A16 (rh S100A16; Q96FQ6; Met 1-Ser 103). S100A16 specific IgG was purified by Human S100A16 affinity chromatography.

Formulation

0.2 µm filtered solution in PBS with 5% trehalose

Storage

This antibody can be stored at 2°C-8°C for one month without detectable loss of activity. Antibody products are stable for twelve months from date of receipt when stored at -20°C to -80°C. Preservative-Free.

Sodium azide is recommended to avoid contamination (final concentration 0.05%-0.1%). It is toxic to cells and should be disposed of properly. Avoid repeated freeze-thaw cycles.

Clonality

Polyclonal

Ig Type

Rabbit IgG

Applications

ELISA, WB, IHC-P, IP

Dilutions

WB: 10-30 µg/mL

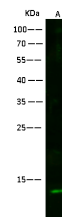
ELISA: 0.1-0.2 µg/mL

This antibody can be used at 0.1-0.2 µg/mL with the appropriate secondary reagents to detect Human S100A16. The detection limit for Human S100A16 is approximately 0.00245 ng/well.

IHC-P: 0.2-1 µg/mL

IP: 4-6 µg/mg of lysate

Validations



Items	Lanes
Sample (whole cell lysate)	A
Sample Volume (µg/lane)	PC3 30
Gel	13% SDS-PAGE reducing gel
Recommended Concentration	10-30 µg/ml
Secondary Antibody	Dylight 800-labeled Antibody To Rabbit IgG (H+L), at 1:5000 dilution.
Developed using Odyssey imaging system.	
Explanation	Predicted band size : 11 kDa Observed band size : 11 kDa

S100A16 Antibody, Rabbit PAb, Antigen Affinity Purified, Western blot

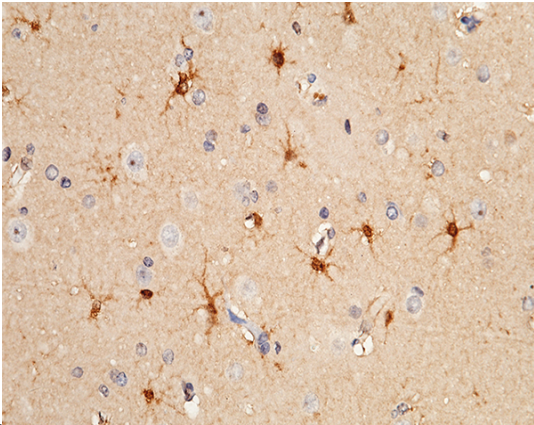


Items	Lanes
Sample (whole cell lysate)	A
Sample quantity	K562 0.5 mg
IP antibody quantity	2 µg
Protein G agarose	15 µl of 50% Protein G Agarose
Gel	13% SDS-PAGE reducing gel
Primary antibody	S100A16 antibody at 10 µg/ml [Cat# 11137-0P02]
Secondary antibody	Dylight 800-labeled antibody to rabbit IgG (H+L), at 1:5000 dilution

S100A16 Antibody, Rabbit PAb, Antigen Affinity

Anti-S100A16 antibody

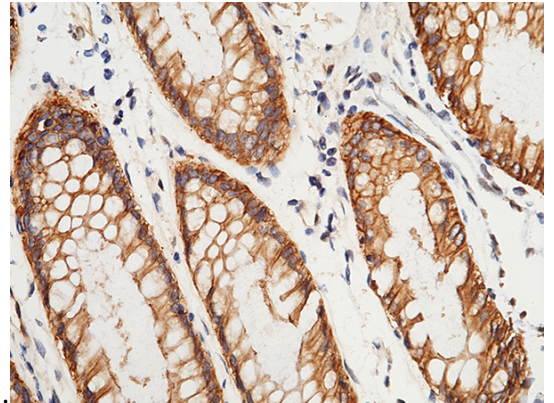
Catalog Number: 104001



Purified

S100A16 Antibody, Rabbit PAb, Antigen Affinity Purified, Immunohistochemistry

Immunochemical staining of human S100A16 in human brain with rabbit polyclonal antibody (1 $\mu\text{g}/\text{mL}$, formalin-fixed paraffin embedded



sections).

S100A16 Antibody, Rabbit PAb, Antigen Affinity Purified, Immunohistochemistry

Immunochemical staining of human S100A16 in human colon with rabbit polyclonal antibody (1 $\mu\text{g}/\text{mL}$, formalin-fixed paraffin embedded sections).