

# MYPT1 antibody



Catalog Number: 113001

## Product name

MYPT1 antibody

## Immunogen

[Human MYPT1 Recombinant protein \(His tag\)](#)

## Specificity

Human, Mouse, Rat; other species not tested.

## Antibody description

MYPT1 Rabbit Polyclonal antibody. Positive IHC detected in human heart tissue, human gliomas tissue, human skeletal muscle tissue. Positive IF detected in HeLa cells. Positive IP detected in HEK-293 cells. Positive WB detected in HeLa cells, HEK-293 cells. Observed molecular weight by Western-blot: 130 kDa

## Preparation

This antibody was obtained by immunization of MYPT1 recombinant protein (Accession Number: NM\_002480). Purification method: Antigen affinity purified.

## Formulation

PBS with 0.02% sodium azide and 50% glycerol pH 7.3.

## Storage

Store at -20°C. DO NOT ALIQUOT

## Clonality

Polyclonal

## Ig Type

Rabbit IgG

## Applications

ELISA, WB, IHC, IP, IF

## Dilutions

Recommended Dilution:

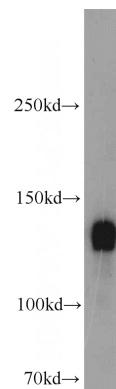
WB: 1:1000-1:10000

IP: 1:200-1:2000

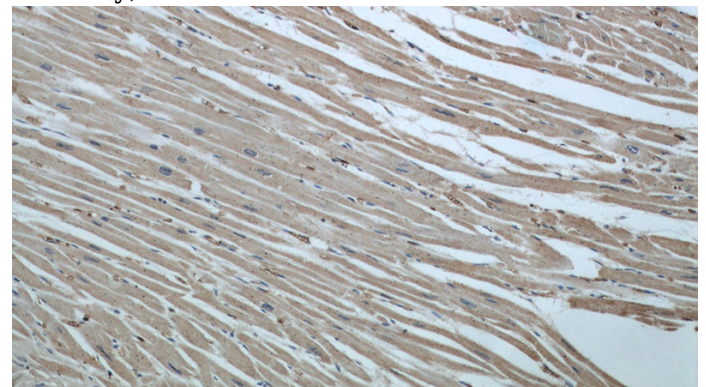
IHC: 1:20-1:200

IF: 1:50-1:500

## Validations



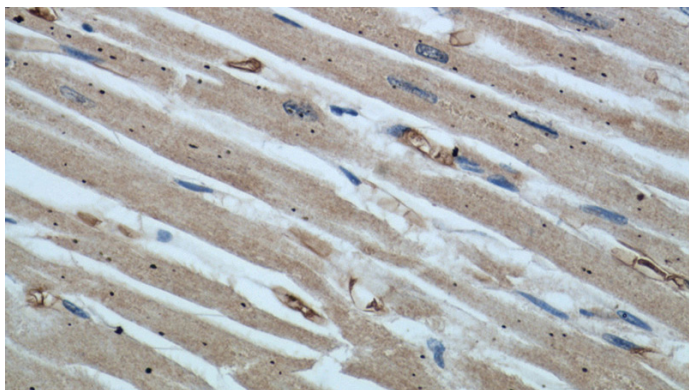
HeLa cells were subjected to SDS PAGE followed by western blot with Catalog No:113001(MYPT1 antibody) at dilution of 1:3000



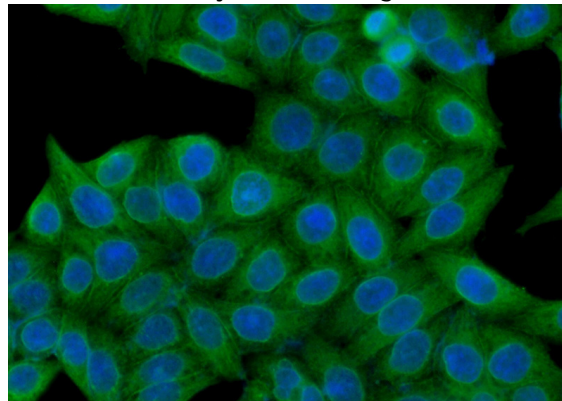
Immunohistochemical of paraffin-embedded human heart using Catalog No:113001(MYPT1 antibody) at dilution of 1:50 (under 10x lens)

# MYPT1 antibody

Catalog Number: 113001



IP Result of anti-MYPT1 (IP:Catalog No:113001, 4ug; Detection:Catalog No:113001 1:500) with HEK-293 cells lysate 1200ug.



Immunohistochemical of paraffin-embedded human heart using Catalog No:113001(MYPT1 antibody) at dilution of 1:50 (under 40x lens)

Immunofluorescent analysis of (-20oc Ethanol) fixed HeLa cells using Catalog No:113001(MYPT1 Antibody) at dilution of 1:50 and Alexa Fluor 488-conjugated AffiniPure Goat Anti-Rabbit IgG(H+L)

