

Anti-LDH-A / LDHA antibody



Catalog Number: 100001

Product name

Anti-LDH-A / LDHA antibody

Immunogen

[Mouse LDH-A / LDHA \(His Tag\) recombinant protein](#)

Specificity

Mouse LDH-A / LDHA

Antibody description

Rabbit polyclonal to LDH-A / LDHA

Preparation

Produced in rabbits immunized with purified, recombinant Mouse LDH-A / LDHA (rM LDH-A / LDHA; NP_034829.1; Met1-Phe332). LDH-A / LDHA specific IgG was purified by Mouse LDH-A / LDHA affinity chromatography.

Formulation

0.2 μ m filtered solution in PBS

Storage

This antibody can be stored at 2°C-8°C for one month without detectable loss of activity. Antibody products are stable for twelve months from date of receipt when stored at -20°C to -80°C.

Preservative-Free.

Sodium azide is recommended to avoid contamination (final concentration 0.05%-0.1%). It is toxic to cells and should be disposed of properly. Avoid repeated freeze-thaw cycles.

Clonality

Polyclonal

Ig Type

Rabbit IgG

Applications

ELISA, WB, IP

Dilutions

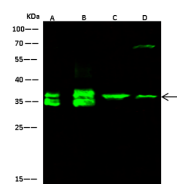
WB: 2-10 μ g/ml

ELISA: 0.1-0.2 μ g/ml

This antibody can be used at 0.1-0.2 μ g/ml with the appropriate secondary reagents to detect Mouse LDH-A / LDHA.

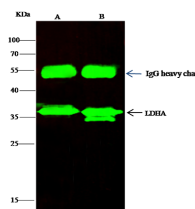
IP: 0.5-2 uL/mg of lysate

Validations



Lanes	A	B	C	D
Items				
Sample (whole cell lysate)	MCF7	NIH3T3	Jurkat	A431
Sample Volume (μg/lane)	30	30	30	30
Gel	13% SDS-PAGE reducing gel			
Recommended Concentration	2-10 μg/ml			
Secondary Antibody	Dylight 800-labeled Antibody to Rabbit IgG (H+L), at 1:5000 dilution			
Developed using Odyssey imaging system.				
Explanation	Predicted band size : 37 kDa			
	Observed band size : 37 kDa			
	Additional bands at : 68 kDa and 35 kDa (We are unsure as to the identity of these extra bands. They are possible non-specific bindings).			

LDH-A / LDHA Antibody, Rabbit PAb, Antigen Affinity Purified, Western blot



Lanes	A	B
Items		
Sample (whole cell lysate)	Jurkat	MCF7
Sample quantity	0.5 mg	
IP antibody quantity	2 μg	
Protein G agarose	15 μl of 50% Protein G Agarose	
Gel	13% SDS-PAGE reducing gel	
Primary antibody	HIS-mLDHA antibody at 10 μg/ml	
Secondary antibody	Dylight 800-labeled antibody to rabbit IgG (H+L), at 1:5000 dilution	

LDH-A / LDHA Antibody, Rabbit PAb, Antigen Affinity Purified, Immunoprecipitation