

Anti-NRF1 Rabbit antibody



Catalog Number: 166798

Product name

Anti-NRF1 Rabbit antibody

Specificity

Human, Mouse, Rat

Antibody description

NRF1 Rabbit polyclonal antibody

Preparation

Antigen: A synthesized peptide derived from human NRF1

Formulation

Rabbit IgG in phosphate buffered saline , pH 7.4, 150mM NaCl, 0.02% sodium azide and 50% glycerol.

Storage

Store at 4°C short term. Store at -20°C long term. Avoid freeze / thaw cycle.

Clonality

Polyclonal

Ig Type

Rabbit IgG

Applications

WB, IHC-P, ICC/IF, IP, FC

Dilutions

WB: 1/500-1/2000

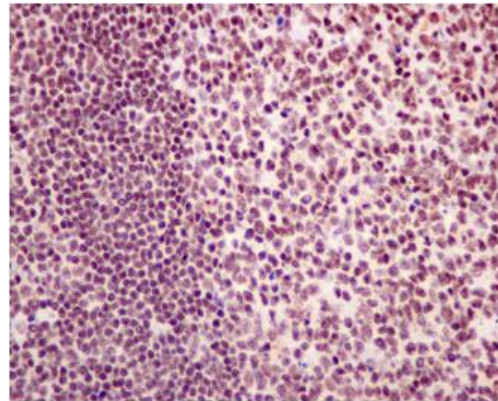
IHC: 1/50-1/200

ICC/IF: 1/50-1/200

IP: 1/50

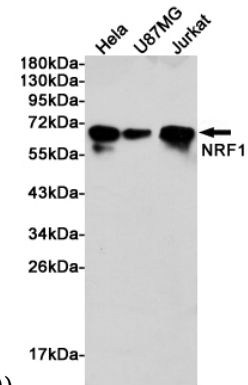
FC: 1/50

Validations

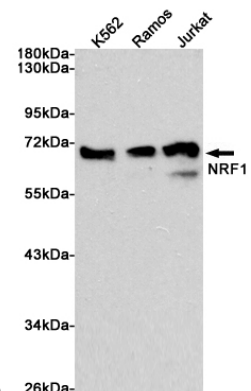


Immunohistochemistry assay of paraffin embedded tonsil tissue using anti-NRF1 ,showing

nucleus staining.(x40)



Western blot analysis of extracts from HeLa, U87MG and Jurkat cells using NRF1 rabbit pAb at 1:1000 dilution. Predicted band size: 68kDa.



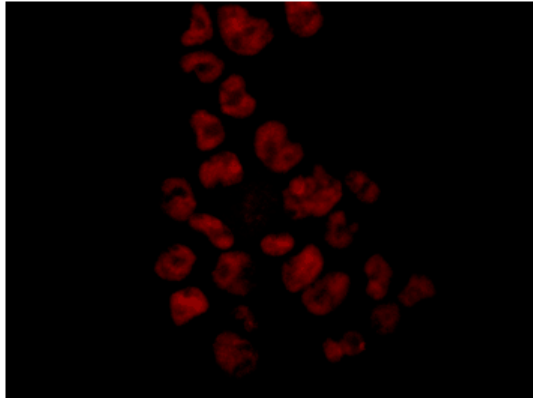
Observed band size: 68kDa.

Western blot analysis of extracts from K562, Ramos and Jurkat cells using NRF1 Rabbit pAb at 1:1000 dilution Predicted band size: 68kDa. Observed band size: 68kDa.

Anti-NRF1 Rabbit antibody



Catalog Number: 166798



Immunocytochemistry assay of 293T using anti-NRF1 (1:250), showing nucleus staining.(x40)