

Anti-Chga antibody

Catalog Number: 175798

Product name

Anti-Chga antibody

Specificity

Human, Mouse, Rat

Antibody description

Rabbit polyclonal antibody to Chga

Preparation

This antigen of this antibody was peptide

Formulation

Liquid, 1*PBS (pH7.4), 0.2% BSA, 40% Glycerol.
Preservative: 0.05% Sodium Azide.

Storage

Store at +4°C after thawing. Aliquot store at -20°C or -80°C. Avoid repeated freeze / thaw cycles.

Clonality

Polyclonal

Ig Type

Rabbit IgG

Applications

WB, IHC-P, FC

Dilutions

WB: 1:2,000

IHC-P: 1:200

FC: 1:100-1:200

Validations

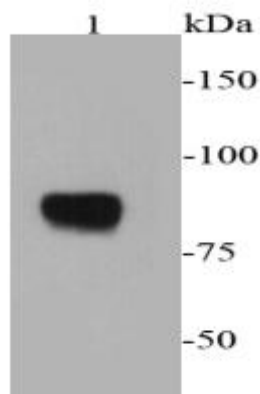


Fig1: Western blot analysis of chromogranin A on PC12 cell lysates using anti-chromogranin A antibody at 1/2000 dilution.

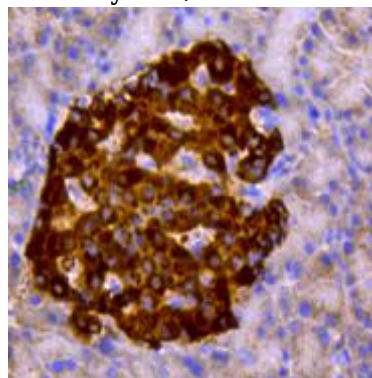


Fig2: Immunohistochemical analysis of paraffin-embedded rat pancreas tissue using anti-chromogranin A antibody. Counter stained with

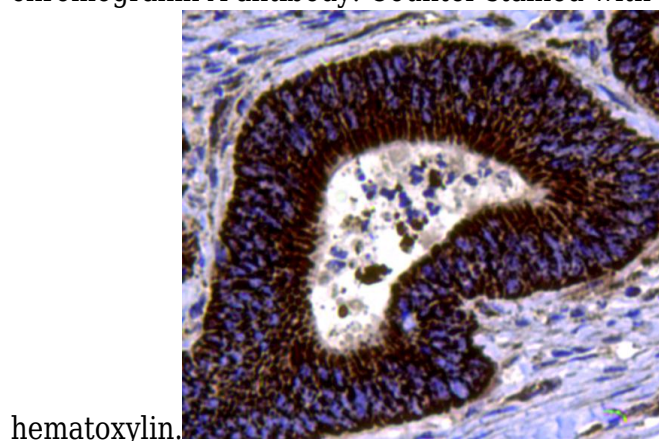
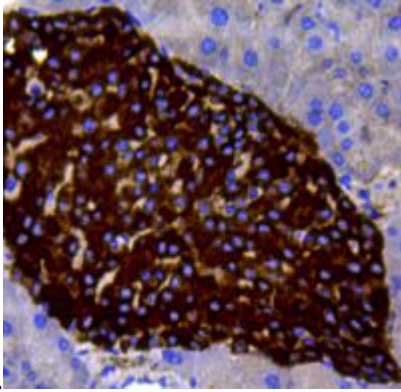
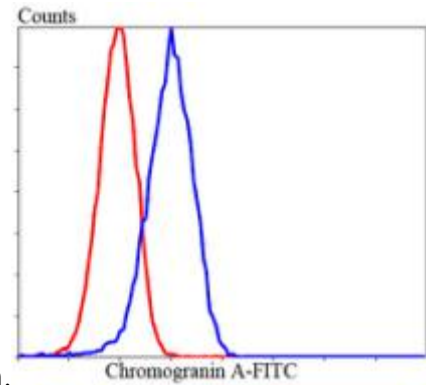


Fig3: Immunohistochemical analysis of paraffin-embedded human colon cancer tissue using anti-chromogranin A antibody. Counter stained with



hematoxylin.

Fig4: Immunohistochemical analysis of paraffin-embedded mouse pancreas tissue using anti-chromogranin A antibody. Counter stained with



hematoxylin.

Fig5: Flow cytometric analysis of Lovo cells with chromogranin A antibody at 1/100 dilution (blue) compared with an unlabelled control (cells without incubation with primary antibody; red). Goat anti rabbit IgG (FITC) was used as the secondary antibody.