

Inhibin beta A antibody



Catalog Number: 111798

Product name

Inhibin beta A antibody

WB: 1:500-1:5000

IHC: 1:20-1:200

Specificity

Human, Mouse, Rat; other species not tested.

Antibody description

Inhibin beta A Rabbit Polyclonal antibody. Positive IHC detected in human lung cancer tissue, human stomach cancer tissue, human testis tissue.

Positive WB detected in HeLa cells, A549 cells, BGC-823 cells, HepG2 cells, mouse liver tissue, SGC-7901 cells. Observed molecular weight by Western-blot: 47 kDa

Preparation

This antibody was obtained by immunization of Inhibin beta A recombinant protein (Accession Number: XM_017012176). Purification method: Antigen affinity purified.

Formulation

PBS with 0.02% sodium azide and 50% glycerol pH 7.3.

Storage

Store at -20°C. DO NOT ALIQUOT

Clonality

Polyclonal

Ig Type

Rabbit IgG

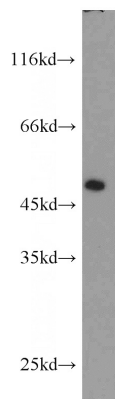
Applications

ELISA, WB, IHC

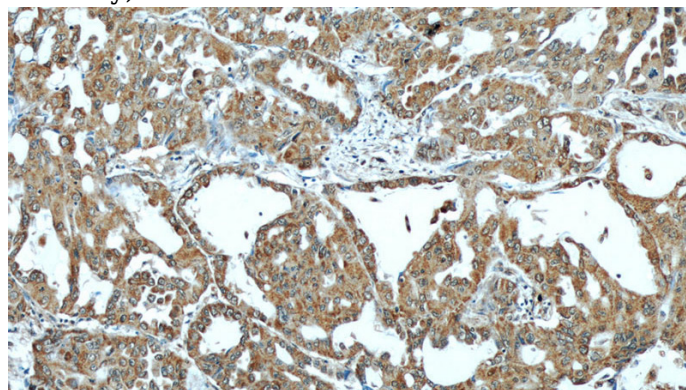
Dilutions

Recommended Dilution:

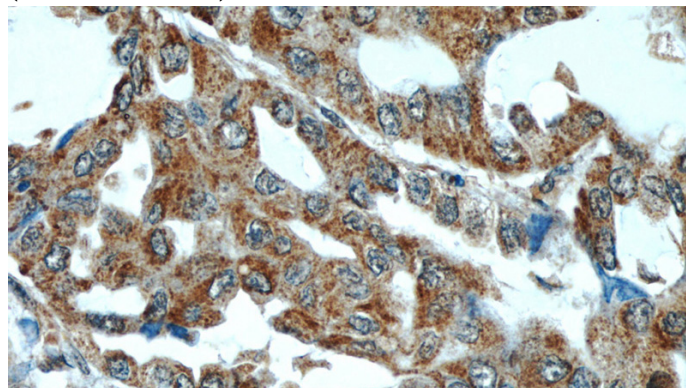
Validations



HeLa cells were subjected to SDS PAGE followed by western blot with Catalog No:111798(INHBA antibody) at dilution of 1:1000



Immunohistochemical of paraffin-embedded human lung cancer using Catalog No:111798(INHBA antibody) at dilution of 1:50 (under 10x lens)



Immunohistochemical of paraffin-embedded

Inhibin beta A antibody



Catalog Number: 111798

human lung cancer using Catalog

No:111798(INHBA antibody) at dilution of 1:50
(under 40x lens)