

Phospho-CDC25A-S76 pAb

Catalog Number: 166398

Product name

Phospho-CDC25A-S76 pAb

Specificity

Human, Mouse, Rat

Antibody description

Polyclonal antibody to Phospho-CDC25A-S76

Preparation

Antigen: A phospho specific peptide corresponding to residues surrounding S76 of human CDC25A

Formulation

PBS with 0.02% sodium azide, 50% glycerol, pH7.3.

Storage

Store at -20°C. Avoid freeze / thaw cycles.

Clonality

Polyclonal

Ig Type

Rabbit IgG

Applications

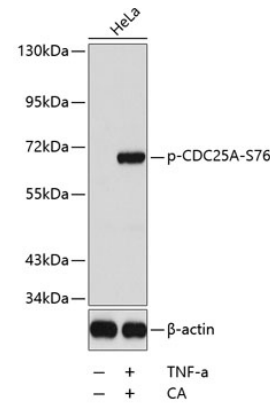
WB, IHC

Dilutions

WB 1:500 - 1:2000

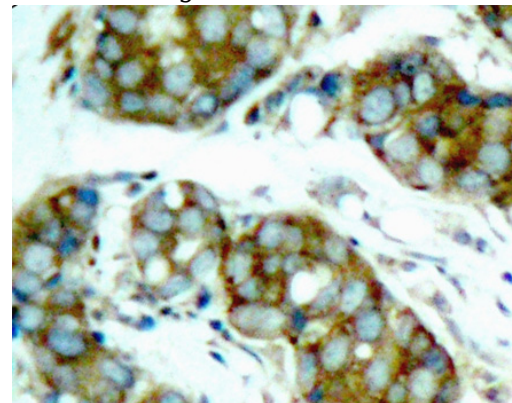
IHC 1:50 - 1:100

Validations



Western blot - Phospho-CDC25A-S76 pAb

Western blot analysis of extracts from HeLa cells using phospho-CDC25A-S76 antibody. Secondary antibody: HRP Goat Anti-Rabbit IgG (H+L) at 1:10000 dilution. Lysates/proteins: 25ug per lane. Blocking buffer: 3% BSA.



Immunohistochemistry - Phospho-CDC25A-S76 pAb

Immunohistochemistry of paraffin-embedded human breast carcinoma using phospho-CDC25A-S76 antibody.