

Anti-Emp1 antibody



Catalog Number: 175398

Product name

Anti-Emp1 antibody

WB:1:500-2000

IHC-P:1:400-800

FC:3ug/Test

Specificity

Human, Mouse, Rat

Validations

Antibody description

Rabbit polyclonal antibody to Emp1

Preparation

This antigen of this antibody was klh conjugated synthetic peptide derived from mouse emp1 101-160/160

Formulation

Liquid, 0.01M TBS(pH7.4) with 1% BSA, 0.03% Proclin300 and 50% Glycerol.

Storage

Store at -20°C for one year. Avoid repeated freeze/thaw cycles. The lyophilized antibody is stable at room temperature for at least one month and for greater than a year when kept at -20°C. When reconstituted in sterile pH 7.4 0.01M PBS or diluent of antibody the antibody is stable for at least two weeks at 2-4°C.

Clonality

Polyclonal

Ig Type

Rabbit IgG

Applications

WB, IHC-P, FC

Dilutions

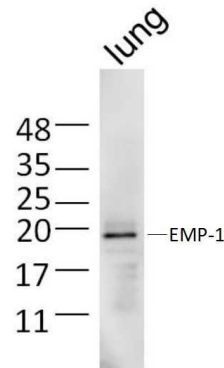
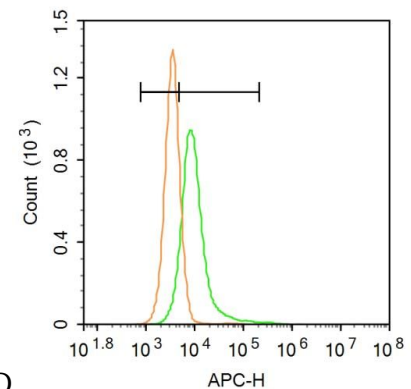


Fig1: Sample: Lung (Mouse) Lysate at 40 ug; Primary: Anti-EMP-1 at 1/300 dilution; Secondary: IRDye800CW Goat Anti-Rabbit IgG at 1/20000 dilution; Predicted band size: 17 kD; Observed



band size: 19 kD

Fig2: Blank control: A431.; Primary Antibody (green line): Rabbit Anti-EMP-1 antibody ; Dilution: 3µg /10⁶ cells;; Isotype Control Antibody (orange line): Rabbit IgG .; Secondary Antibody: Goat anti-rabbit IgG-AF647; Dilution: 3µg /test.; Protocol; The cells were incubated in 5%BSA to block non-specific protein-protein interactions for 30 min at room temperature .Cells stained with Primary Antibody for 30 min at room temperature. The secondary antibody used for 40 min at room temperature. Acquisition of 20,000 events was performed.