

C20orf195 antibody



Catalog Number: 108698

Product name

C20orf195 antibody

IHC: 1:20-1:200

IF: 1:20-1:200

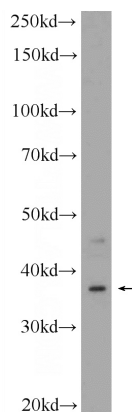
Specificity

Human, Mouse, Rat; other species not tested.

Validations

Antibody description

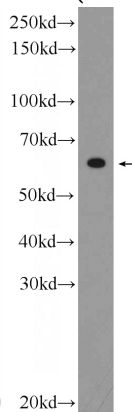
C20orf195 Rabbit Polyclonal antibody. Positive WB detected in HepG2 cells, SMMC-7721 cells. Positive IF detected in HepG2 cells. Positive IHC detected in human prostate cancer tissue. Observed molecular weight by Western-blot: 37 kDa



Preparation

This antibody was obtained by immunization of C20orf195 recombinant protein (Accession Number: NM_024059). Purification method: Antigen affinity purified.

HepG2 cells were subjected to SDS PAGE followed by western blot with Catalog No:108698(C20orf195 Antibody) at dilution of



Formulation

PBS with 0.1% sodium azide and 50% glycerol pH 7.3.

1:300

Storage

Store at -20°C. DO NOT ALIQUOT

Clonality

Polyclonal

SMMC-7721 cells were subjected to SDS PAGE followed by western blot with Catalog No:108698(C20orf195 Antibody) at dilution of

Ig Type

Rabbit IgG

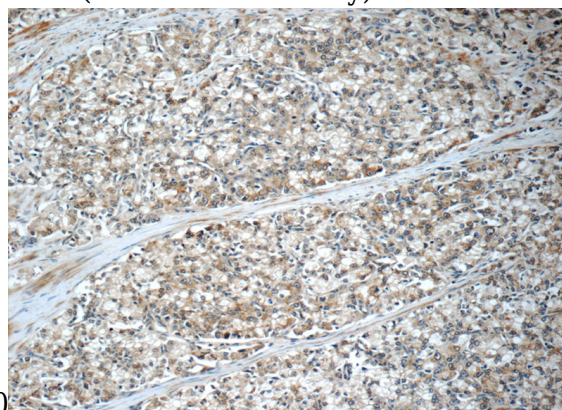
Applications

ELISA, WB, IHC, IF

Dilutions

Recommended Dilution:

WB: 1:200-1:1000



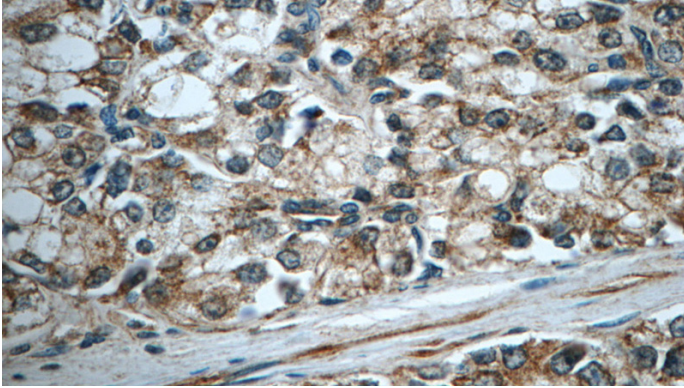
1:300

Immunohistochemistry of paraffin-embedded

C20orf195 antibody

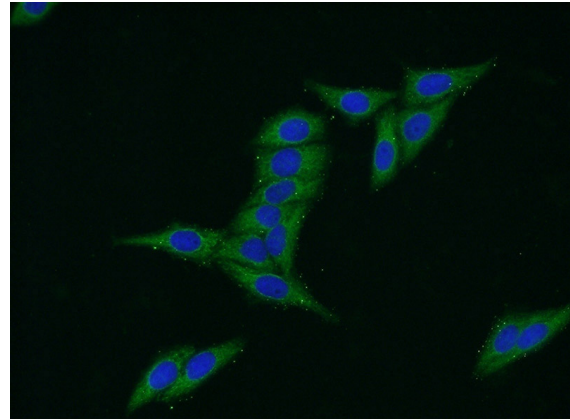
Catalog Number: 108698

human prostate cancer tissue slide using Catalog No:108698(C20orf195 Antibody) at dilution of 1:50 (under 10x lens)



Immunohistochemistry of paraffin-embedded human prostate cancer tissue slide using Catalog No:108698(C20orf195 Antibody) at dilution of

1:50 (under 40x lens)



Immunofluorescent analysis of HepG2 cells using Catalog No:108698(C20orf195 Antibody) at dilution of 1:50 and Alexa Fluor 488-conjugated AffiniPure Goat Anti-Rabbit IgG(H+L)