

# Anti-Galectin 3 Rabbit antibody



Catalog Number: 167298

## Product name

WB: 1/5000

Anti-Galectin 3 Rabbit antibody

IHC: 1/200

## Specificity

FC: 1/200

Human, Mouse, Rat

## Antibody description

Galectin 3 Rabbit polyclonal antibody

## Preparation

Antigen: A synthetic peptide of human Galectin 3

## Formulation

Supplied in 50nM Tris-Glycine(pH 7.4), 0.15M NaCl, 40%Glycerol, 0.01% sodium azide and 0.05% BSA.

## Storage

Store at -20°C. Stable for 12 months from date of receipt.

## Clonality

Polyclonal

## Ig Type

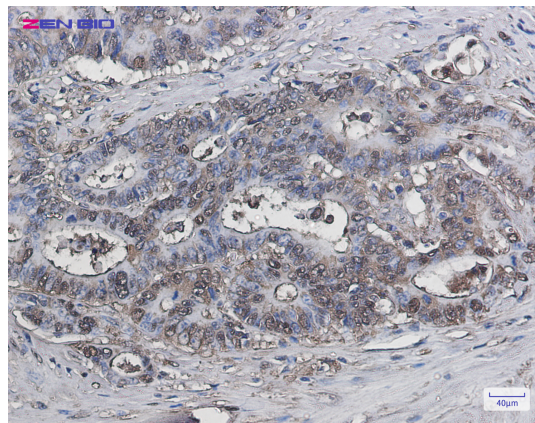
Rabbit IgG

## Applications

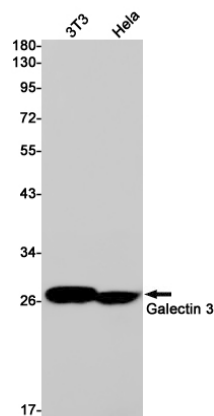
WB, IHC-P, FC

## Dilutions

## Validations



Immunohistochemistry of Galectin 3 in paraffin-embedded Human colon cancer tissue using Galectin 3 Rabbit pAb at dilution 1/50



Western blot detection of Galectin 3 in 3T3, HeLa cell lysates using Galectin 3 Rabbit pAb(1:1000 diluted). Predicted band size: 26kDa. Observed band size: 28kDa.