

# KIDINS220 antibody



Catalog Number: 111998

## Product name

KIDINS220 antibody

## Specificity

Human, Mouse, Rat; other species not tested.

## Antibody description

KIDINS220 Rabbit Polyclonal antibody. Positive WB detected in HeLa cells, HEK-293 cells, human brain tissue, Raji cells. Observed molecular weight by Western-blot: 186-197 kDa

## Preparation

This antibody was obtained by immunization of KIDINS220 recombinant protein (Accession Number: NM\_001348736). Purification method: Antigen affinity purified.

## Formulation

PBS with 0.02% sodium azide and 50% glycerol pH 7.3.

## Storage

Store at -20°C. DO NOT ALIQUOT

## Clonality

Polyclonal

## Ig Type

Rabbit IgG

## Applications

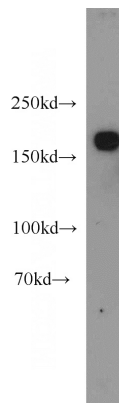
ELISA, WB

## Dilutions

Recommended Dilution:

WB: 1:500-1:5000

## Validations



HeLa cells were subjected to SDS PAGE followed by western blot with Catalog No:111998(KIDINS220 antibody) at dilution of 1:1000