

# CSN1 antibody

Catalog Number: 109598

## Product name

CSN1 antibody

IHC: 1:20-1:200

IF: 1:10-1:100

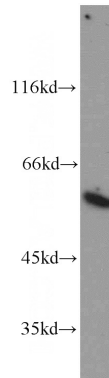
## Specificity

Human; other species not tested.

## Validations

## Antibody description

CSN1 Rabbit Polyclonal antibody. Positive IHC detected in human prostate cancer tissue. Positive IF detected in MCF-7 cells. Positive WB detected in HeLa cells, HEK-293 cells, HT-1080 cells, K-562 cells, MCF7 cells, Raji cells. Observed molecular weight by Western-blot: 60-70 kDa



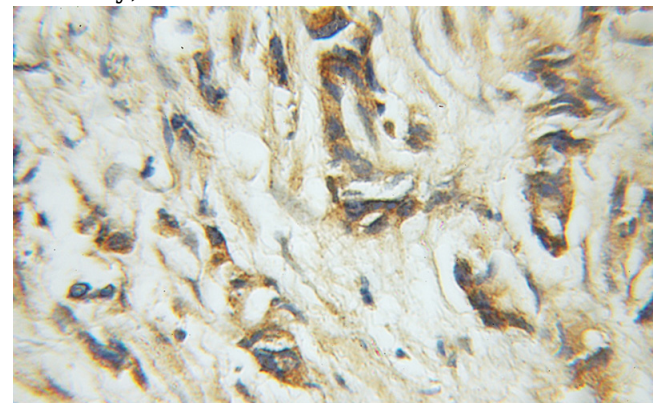
## Preparation

This antibody was obtained by immunization of CSN1 recombinant protein (Accession Number: NM\_004127). Purification method: Antigen affinity purified.

HeLa cells were subjected to SDS PAGE followed by western blot with Catalog No:109598(GPS1 antibody) at dilution of 1:500

## Formulation

PBS with 0.02% sodium azide and 50% glycerol pH 7.3.



## Storage

Store at -20°C. DO NOT ALIQUOT

Immunohistochemical of paraffin-embedded human prostate cancer using Catalog No:109598(GPS1 antibody) at dilution of 1:50 (under 10x lens)

## Clonality

Polyclonal

## Ig Type

Rabbit IgG

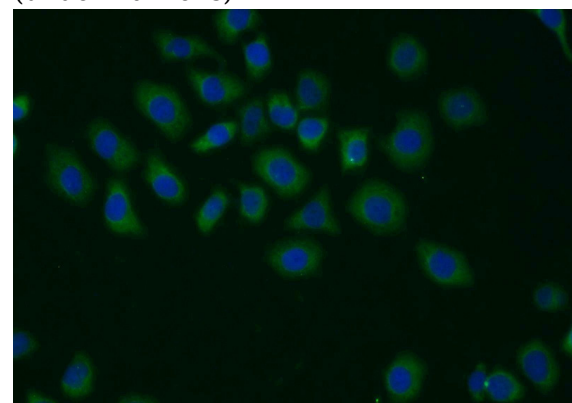
## Applications

ELISA, WB, IHC, IF

## Dilutions

Recommended Dilution:

WB: 1:500-1:5000



Immunofluorescent analysis of MCF-7 cells using

# CSN1 antibody



Catalog Number: 109598

---

Catalog No:109598(GPS1 Antibody) at dilution of 1:25 and Alexa Fluor 488-conjugated AffiniPure Goat Anti-Rabbit IgG(H+L)