

# SND1 antibody

Catalog Number: 107598

## Product name

SND1 antibody

IP: 1:200-1:2000

IHC: 1:20-1:200

## Specificity

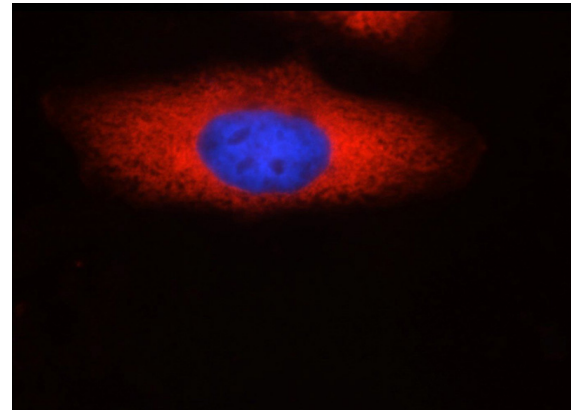
Human, Mouse; other species not tested.

IF: 1:20-1:200

## Antibody description

SND1 Mouse Monoclonal antibody. Positive IF detected in HepG2 cells. Positive IHC detected in human pancreas tissue, human colon cancer tissue. Positive WB detected in HeLa cells, Jurkat cells. Positive IP detected in HeLa cells. Observed molecular weight by Western-blot: 101 kDa

## Validations



Immunofluorescent analysis of HepG2 cells using Catalog No:107598(SND1 Antibody) at dilution of 1:50 and Rhodamine-labeled goat anti-mouse

## Preparation

This antibody was obtained by immunization of SND1 recombinant protein (Accession Number: NM\_014390). Purification method: Protein G purified.

## Formulation

PBS with 0.02% sodium azide and 50% glycerol pH 7.3.

## Storage

Store at -20°C. DO NOT ALIQUOT

## Clonality

Monoclonal

## Ig Type

Mouse IgG1

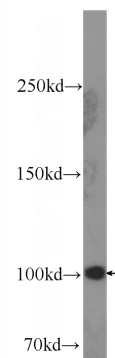
## Applications

ELISA, IF, WB, IHC, IP

## Dilutions

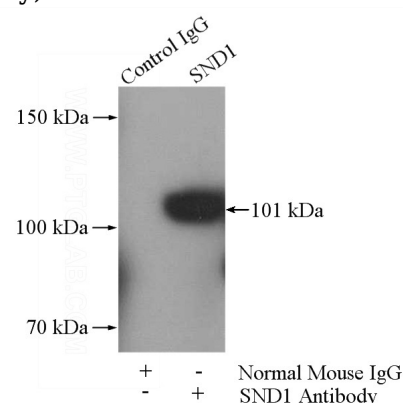
Recommended Dilution:

WB: 1:500-1:5000



IgG (red).

HeLa cells were subjected to SDS PAGE followed by western blot with Catalog No:107598(SND1 Antibody) at dilution of 1:1000

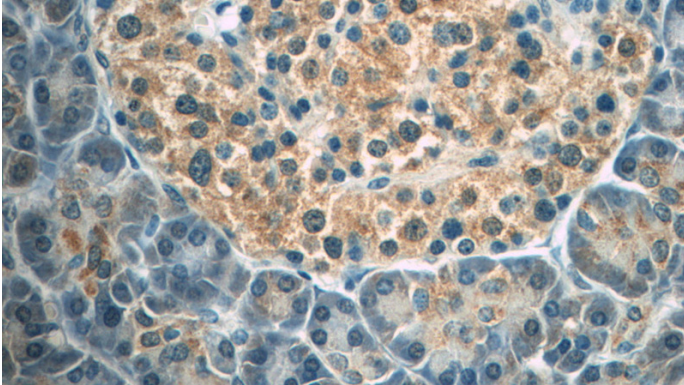


# SND1 antibody

Catalog Number: 107598

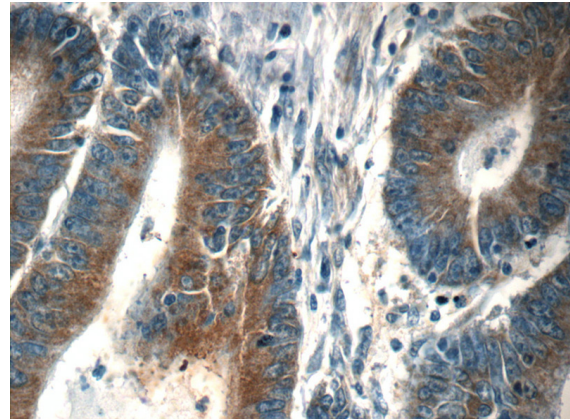
---

IP Result of anti-SND1 (IP:Catalog No:107598, 5ug; Detection:Catalog No:107598 1:500) with HeLa cells lysate 1400ug.



Immunohistochemistry of paraffin-embedded human pancreas tissue slide using Catalog No:107598(SND1 Antibody) at dilution of 1:50

(under 40x lens)



Immunohistochemistry of paraffin-embedded human colon cancer tissue slide using Catalog No:107598(SND1 Antibody) at dilution of 1:50 (under 40x lens)