

# USP20 antibody



Catalog Number: 116598

## Product name

USP20 antibody

WB: 1:200-1:2000

IP: 1:200-1:2000

## Specificity

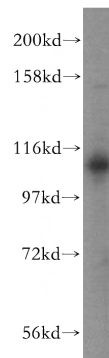
Human, Mouse, Rat; other species not tested.

IHC: 1:20-1:200

## Antibody description

USP20 Rabbit Polyclonal antibody. Positive IHC detected in human kidney tissue, human brain tissue, human lung tissue, human ovary tissue, human spleen tissue, human testis tissue. Positive IP detected in HeLa cells. Positive WB detected in HepG2 cells, HeLa cells. Observed molecular weight by Western-blot: 110-115 kDa

## Validations



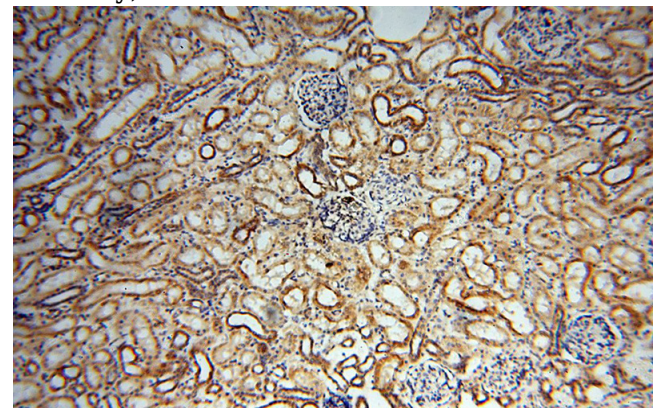
## Preparation

This antibody was obtained by immunization of USP20 recombinant protein (Accession Number: NM\_006676). Purification method: Antigen affinity purified.

HepG2 cells were subjected to SDS PAGE followed by western blot with Catalog No:116598(USP20 antibody) at dilution of 1:400

## Formulation

PBS with 0.02% sodium azide and 50% glycerol pH 7.3.



## Storage

Store at -20°C. DO NOT ALIQUOT

## Clonality

Polyclonal

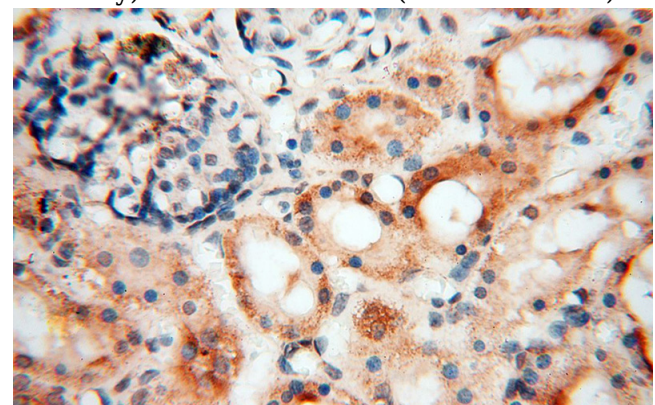
Immunohistochemical of paraffin-embedded human kidney using Catalog No:116598(USP20 antibody) at dilution of 1:50 (under 10x lens)

## Ig Type

Rabbit IgG

## Applications

ELISA, WB, IHC, IP



## Dilutions

Recommended Dilution:

# USP20 antibody

Catalog Number: 116598

Immunohistochemical of paraffin-embedded human kidney using Catalog No:116598(USP20 antibody) at dilution of 1:50 (under 40x lens)

IP Result of anti-USP20 (IP:Catalog No:116598, 4ug; Detection:Catalog No:116598 1:500) with HeLa cells lysate 1200ug.

