

# GIT1 Polyclonal Antibody



Catalog Number: 166598

## Product name

GIT1 Polyclonal Antibody

## Specificity

Human, Mouse, Rat

## Antibody description

Polyclonal antibody to GIT1

## Preparation

Antigen: Recombinant fusion protein containing a sequence corresponding to amino acids 460-640 of human GIT1 (NP\_054749.2).

## Formulation

PBS with 0.02% sodium azide, 50% glycerol, pH7.3.

## Storage

Store at -20°C. Avoid freeze / thaw cycles.

## Clonality

Polyclonal

## Ig Type

Rabbit IgG

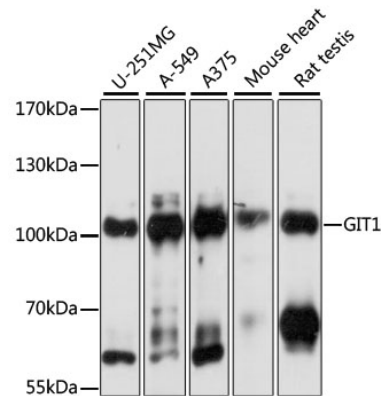
## Applications

WB

## Dilutions

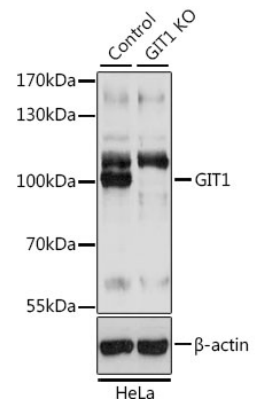
WB 1:200 - 1:2000

## Validations



### Western blot - GIT1 Polyclonal Antibody

Western blot analysis of extracts of various cell lines, using GIT1 antibody at 1:1000 dilution. Secondary antibody: HRP Goat Anti-Rabbit IgG (H+L) at 1:10000 dilution. Lysates/proteins: 25ug per lane. Blocking buffer: 3% nonfat dry milk in TBST. Detection: ECL



Basic Kit .Exposure time: 1s.

### Western blot - GIT1 Polyclonal Antibody

Western blot analysis of extracts from normal (control) and GIT1 knockout HeLa cells, using GIT1 antibody at 1:3000 dilution. Secondary antibody: HRP Goat Anti-Rabbit IgG (H+L) at 1:10000 dilution. Lysates/proteins: 25ug per lane. Blocking buffer: 3% nonfat dry milk in TBST. Detection: ECL Basic Kit .Exposure time: 1s.