

SRPRB antibody



Catalog Number: 115598

Product name

SRPRB antibody

Specificity

human, mouse, rat; other species not tested.

Antibody description

SRPRB Rabbit Polyclonal antibody. Positive WB detected in human liver tissue, HepG2 cells. Observed molecular weight by Western-blot: 30kd

Preparation

This antibody was obtained by immunization of SRPRB recombinant protein (Accession Number: NM_001379313). Purification method: Antigen affinity purified.

Formulation

PBS with 0.02% sodium azide and 50% glycerol pH 7.3.

Storage

Store at -20°C. DO NOT ALIQUOT

Clonality

Polyclonal

Ig Type

Rabbit IgG

Applications

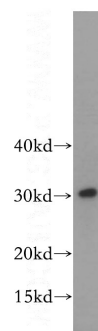
ELISA, WB

Dilutions

Recommended Dilution:

WB: 1:200-1:2000

Validations



human liver tissue were subjected to SDS PAGE followed by western blot with Catalog No:115598(SRPRB antibody) at dilution of 1:400