

PARVA antibody

Catalog Number: 113598

Product name

PARVA antibody

Specificity

human, mouse, rat; other species not tested.

Antibody description

PARVA Rabbit Polyclonal antibody. Positive IHC detected in human kidney. Positive WB detected in mouse heart tissue, mouse kidney tissue. Observed molecular weight by Western-blot: 33kd

Preparation

This antibody was obtained by immunization of Peptide (Accession Number: NM_018222). Purification method: Antigen affinity purified.

Formulation

PBS with 0.02% sodium azide and 50% glycerol pH 7.3.

Storage

Store at -20°C. DO NOT ALIQUOT

Clonality

Polyclonal

Ig Type

Rabbit IgG

Applications

ELISA, WB, IHC

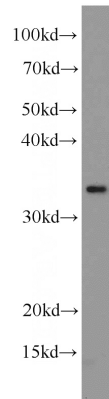
Dilutions

Recommended Dilution:

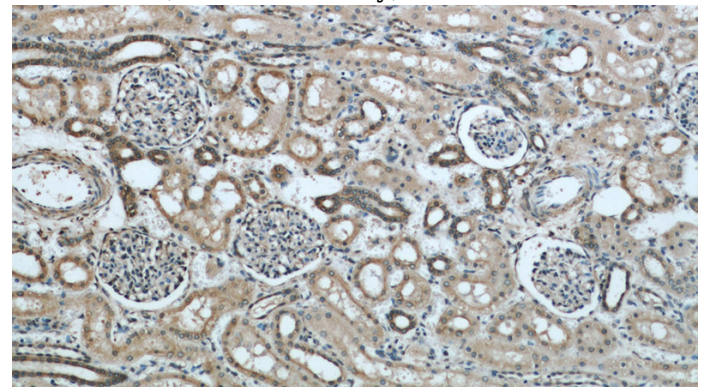
WB: 1:200-1:2000

IHC: 1:20-1:200

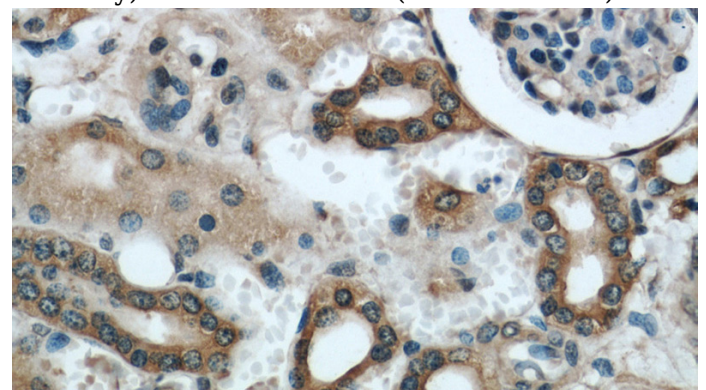
Validations



mouse heart tissue were subjected to SDS PAGE followed by western blot with Catalog No:113598(PARVA antibody) at dilution of 1:500



Immunohistochemical of paraffin-embedded human kidney using Catalog No:113598(PARVA antibody) at dilution of 1:50 (under 10x lens)



Immunohistochemical of paraffin-embedded human kidney using Catalog No:113598(PARVA antibody) at dilution of 1:50 (under 40x lens)