

Human C20orf70 (Fc Tag) recombinant protein



Catalog Number: 501598

General Information

Gene Name Synonym

Parotid secretory protein; Short palate, lung and nasal epithelium carcinoma-associated protein 2

Protein Construction

A DNA sequence encoding the human C20orf70 (Q96DR5) (Met1-Ile249) was expressed, fused with the Fc region of human IgG1 at the C-terminus.

Organism

Human

Expression Host

Human Cells

QC Testing

Purity

> 94 % as determined by SDS-PAGE

Endotoxin

< 1.0 EU per μg of the protein as determined by the LAL method

Stability

Samples are stable for up to twelve months from date of receipt at -70°C

Predicted N terminal

Glu 19

Molecular Mass

The recombinant human C20orf70/Fc is a

disulfide-linked homodimer. The reduced monomer comprises 470 amino acids and has a predicted molecular mass of 51.8 kDa. The apparent molecular mass of the protein is approximately 59 kDa in SDS-PAGE under reducing conditions.

Formulation

Lyophilized from sterile PBS, pH 7.4

1. 5 % trehalose and mannitol are added as protectants before lyophilization.

2. Please contact us for any concerns or special requirements.

Usage Guide

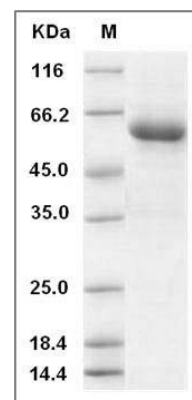
Storage

Store it under sterile conditions at -20°C to -80°C . It is recommended that the protein be aliquoted for optimal storage. Avoid repeated freeze-thaw cycles.

Reconstitution

Adding sterile water, prepare a stock solution of 0.25 mg/ml. Concentration is measured by UV-Vis.

SDS-PAGE



Human BPIFA2 / C20orf70 Protein (Fc Tag) SDS-PAGE