

Anti-FRAT1 Rabbit antibody



Catalog Number: 168898

Product name

Anti-FRAT1 Rabbit antibody

Specificity

Human, Mouse, Rat

Antibody description

FRAT1 Rabbit monoclonal antibody

Preparation

Antigen: A synthetic peptide of human FRAT1

Formulation

Supplied in 50nM Tris-Glycine(pH 7.4), 0.15M NaCl, 40%Glycerol, 0.01% sodium azide and 0.05% BSA.

Storage

Store at 4°C short term. Aliquot and store at -20°C long term. Avoid freeze / thaw cycle.

Clonality

Monoclonal

Ig Type

Rabbit IgG

Applications

WB, ICC/IF, FC, IP

Dilutions

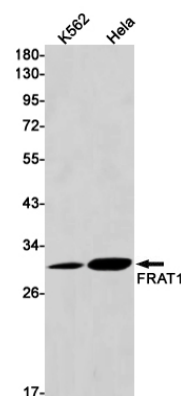
1:1000-1:5000

1:20-1:50

1:50-1:200

1:20-1:50

Validations



Western blot detection of FRAT1 in K562, HeLa cell lysates using FRAT1 Rabbit mAb(1:1000 diluted). Predicted band size: 29kDa. Observed band size: 29kDa.