

YWHAH antibody



Catalog Number: 116898

Product name

YWHAH antibody

IP: 1:500-1:5000

IF: 1:10-1:100

Specificity

Human, Mouse, Rat; other species not tested.

Antibody description

YWHAH Rabbit Polyclonal antibody. Positive WB detected in human brain tissue, A431 cells, mouse brain tissue, NIH/3T3 cells, Raji cells. Positive IP detected in NIH/3T3 cells. Positive IF detected in Hela cells. Observed molecular weight by Western-blot: 28 kDa

Preparation

This antibody was obtained by immunization of YWHAH recombinant protein (Accession Number: NM_003405). Purification method: Antigen affinity purified.

Formulation

PBS with 0.02% sodium azide and 50% glycerol pH 7.3.

Storage

Store at -20°C. DO NOT ALIQUOT

Clonality

Polyclonal

Ig Type

Rabbit IgG

Applications

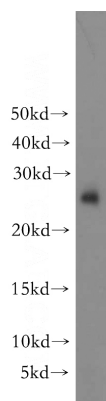
ELISA, WB, IF, IP

Dilutions

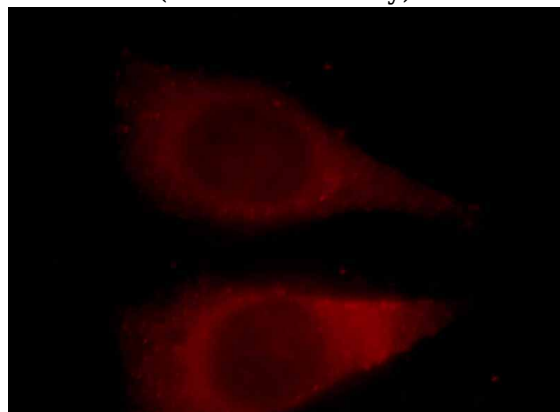
Recommended Dilution:

WB: 1:500-1:5000

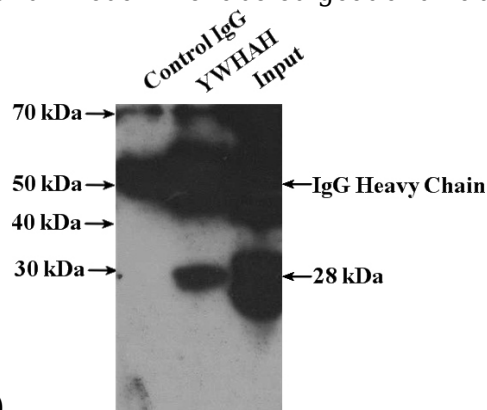
Validations



human brain tissue were subjected to SDS PAGE followed by western blot with Catalog No:116898(YWHAH antibody) at dilution of 1:300



Immunofluorescent analysis of Hela cells, using YWHAH antibody Catalog No:116898 at 1:25 dilution and Rhodamine-labeled goat anti-rabbit



IgG (red).

IP Result of anti-YWHAH (IP:Catalog No:116898,

YWHAH antibody



Catalog Number: 116898

4ug; Detection:Catalog No:116898 1:1000) with NIH/3T3 cells lysate 1600ug.