

Canine EGF recombinant protein (Native)



Catalog Number: 514898

General Information

Gene Name Synonym

EGF [Cleaved into: Epidermal growth factor]

Protein Construction

A DNA sequence encoding the canine EGF (NP_001003094.1) (Asn973-Arg1024) was expressed.

Organism

Canine

Expression Host

Yeast

QC Testing

Purity

> 95 % as determined by SDS-PAGE.

Endotoxin

Please contact us for more information.

Stability

Samples are stable for up to twelve months from date of receipt at -70°C

Predicted N terminal

Asn 973

Molecular Mass

The recombinant canine EGF consists of 52 amino

acids and predicts a molecular mass of 6.2 kDa.

Formulation

Lyophilized from sterile PBS, pH 7.4.

1. Normally 5 % - 8 % trehalose, mannitol and 0.01% Tween80 are added as protectants before lyophilization. Specific concentrations are included in the hardcopy of COA.

2. Please contact us for any concerns or special requirements.

Usage Guide

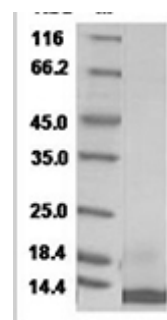
Storage

Store it under sterile conditions at -20°C to -80°C. It is recommended that the protein be aliquoted for optimal storage. Avoid repeated freeze-thaw cycles.

Reconstitution

A hardcopy of COA with reconstitution instruction is sent along with the products. Please refer to it for detailed information.

SDS-PAGE



Canine Epidermal Growth Factor/EGF Protein
14966