

JTV1 antibody



Catalog Number: 111898

Product name

JTV1 antibody

Recommended Dilution:

WB: 1:200-1:2000

Specificity

Human, Mouse, Rat; other species not tested.

IP: 1:500-1:5000

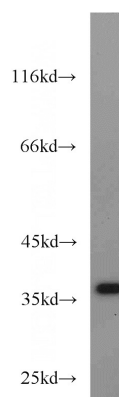
IHC: 1:20-1:200

Antibody description

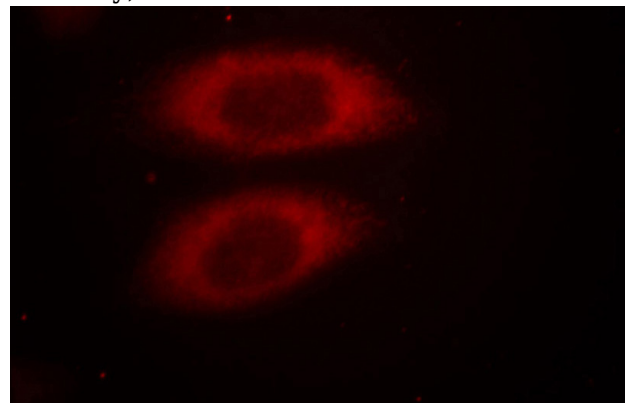
JTV1 Rabbit Polyclonal antibody. Positive IHC detected in human testis tissue, human cerebellum tissue, human kidney tissue. Positive IF detected in HeLa cells, HepG2 cells. Positive IP detected in HeLa cells. Positive WB detected in HeLa cells, HepG2 cells, K-562 cells, L02 cells, mouse liver tissue, NIH/3T3 cells, rat liver tissue. Observed molecular weight by Western-blot: 36 kDa

IF: 1:10-1:100

Validations



HeLa cells were subjected to SDS PAGE followed by western blot with Catalog No:111898(JTV1 antibody) at dilution of 1:1000



Immunofluorescent analysis of HeLa cells, using JTV1 antibody Catalog No:111898 at 1:25 dilution and Rhodamine-labeled goat anti-rabbit IgG (red).

Preparation

This antibody was obtained by immunization of JTV1 recombinant protein (Accession Number: NM_006303). Purification method: Antigen affinity purified.

Formulation

PBS with 0.1% sodium azide and 50% glycerol pH 7.3.

Storage

Store at -20°C. DO NOT ALIQUOT

Clonality

Polyclonal

Ig Type

Rabbit IgG

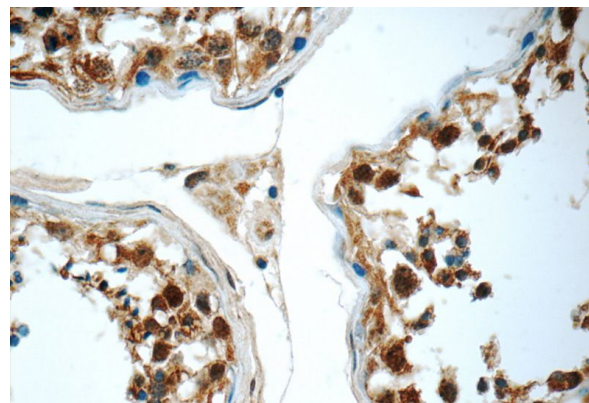
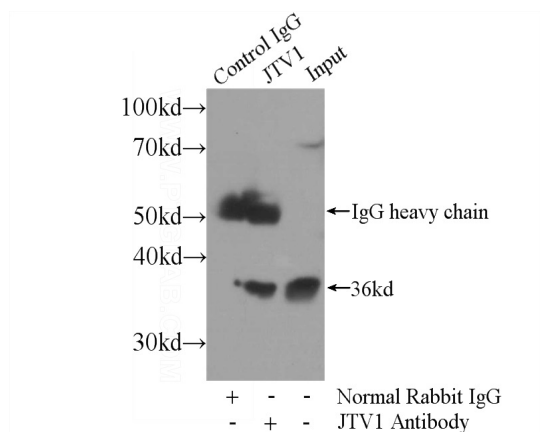
Applications

ELISA, WB, IF, IHC, IP

Dilutions

JTV1 antibody

Catalog Number: 111898



Immunohistochemistry of paraffin-embedded human testis tissue slide using Catalog No:111898(JTV1 Antibody) at dilution of 1:50 (under 40x lens)

IP Result of anti-JTV1 (IP:Catalog No:111898, 3ug; Detection:Catalog No:111898 1:1000) with HeLa cells lysate 800ug.