

TWF1 antibody

Catalog Number: 116498

Product name

TWF1 antibody

Specificity

human, mouse, rat; other species not tested.

Antibody description

TWF1 Rabbit Polyclonal antibody. Positive IHC detected in human pancreas cancer. Positive WB detected in mouse testis tissue, NIH/3T3 cells. Observed molecular weight by Western-blot: 42kd

Preparation

This antibody was obtained by immunization of TWF1 recombinant protein (Accession Number: NM_198974). Purification method: Antigen affinity purified.

Formulation

PBS with 0.1% sodium azide and 50% glycerol pH 7.3.

Storage

Store at -20°C. DO NOT ALIQUOT

Clonality

Polyclonal

Ig Type

Rabbit IgG

Applications

ELISA, WB, IHC

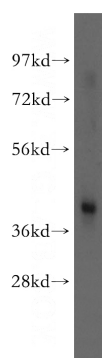
Dilutions

Recommended Dilution:

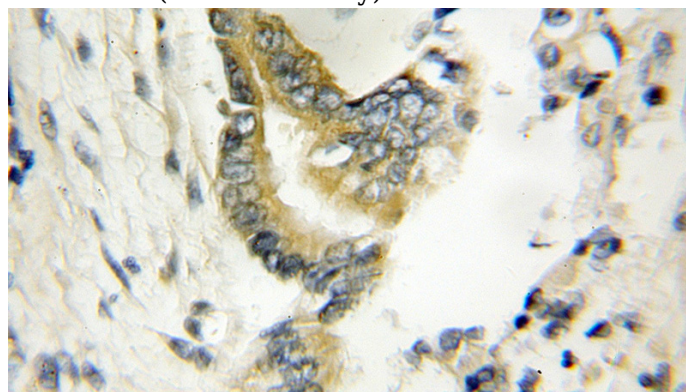
WB: 1:200-1:2000

IHC: 1:20-1:200

Validations



mouse testis tissue were subjected to SDS PAGE followed by western blot with Catalog No:116498(TWF1 antibody) at dilution of 1:200



Immunohistochemical of paraffin-embedded human pancreas cancer using Catalog No:116498(TWF1 antibody) at dilution of 1:50 (under 10x lens)