

# Anti-MYL6B antibody



Catalog Number: 142498

## Product name

Anti-MYL6B antibody

## Specificity

Human MYL6B

## Antibody description

Rabbit Polyclonal to Human MYL6B

## Preparation

Produced in rabbits immunized with a synthetic peptide corresponding to the N-terminus of the Human MYL6B, and purified by antigen affinity chromatography.

## Formulation

0.2 µm filtered solution in PBS

## Storage

This antibody can be stored at 2°C-8°C for one month without detectable loss of activity. Antibody products are stable for twelve months from date of receipt when stored at -20°C to -80°C.

Preservative-Free.

Sodium azide is recommended to avoid contamination (final concentration 0.05%-0.1%). It is toxic to cells and should be disposed of

properly. Avoid repeated freeze-thaw cycles.

## Clonality

Polyclonal

## Ig Type

Rabbit IgG

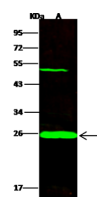
## Applications

WB

## Dilutions

WB: 5-20 µg/ml

## Validations



Lanes	A
Items	
Sample (whole cell lysate)	K562
Sample Volume (µg/lane)	30
Gel	13% SDS-PAGE reducing gel
Recommended Concentration	5-20 µg/ml
Secondary Antibody	Dylight 800-labeled Antibody to Rabbit IgG (H+L), at 1:5000 dilution.
Developed using Odyssey imaging system.	
Explanation	Predicted band size : 23 kDa Observed band size : 25 kDa Additional bands at : 51 kDa (We are unsure as to the identity of these extra bands.)

MYL6B Antibody, Rabbit PAb, Antigen Affinity Purified, Western blot