

EXD2 antibody

Catalog Number: 110498

Product name

EXD2 antibody

WB: 1:200-1:2000

IP: 1:200-1:1000

Specificity

Human, Mouse, Rat; other species not tested.

IHC: 1:20-1:200

IF: 1:10-1:100

Antibody description

EXD2 Rabbit Polyclonal antibody. Positive IF detected in HepG2 cells. Positive IHC detected in human testis tissue. Positive WB detected in mouse lung tissue, mouse brain tissue, mouse pancreas tissue. Positive IP detected in mouse lung tissue. Observed molecular weight by Western-blot: 56 kDa

Preparation

This antibody was obtained by immunization of EXD2 recombinant protein (Accession Number: XM_011536908). Purification method: Antigen affinity purified.

Formulation

PBS with 0.02% sodium azide and 50% glycerol pH 7.3.

Storage

Store at -20°C. DO NOT ALIQUOT

Clonality

Polyclonal

Ig Type

Rabbit IgG

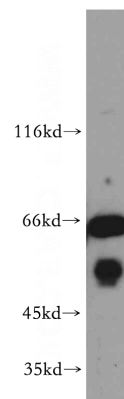
Applications

ELISA, WB, IF, IHC, IP

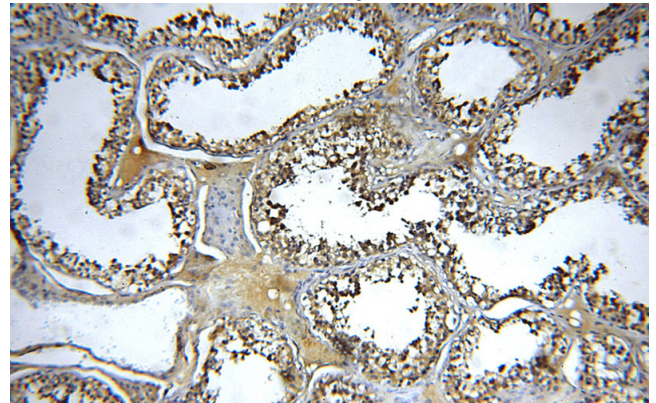
Dilutions

Recommended Dilution:

Validations



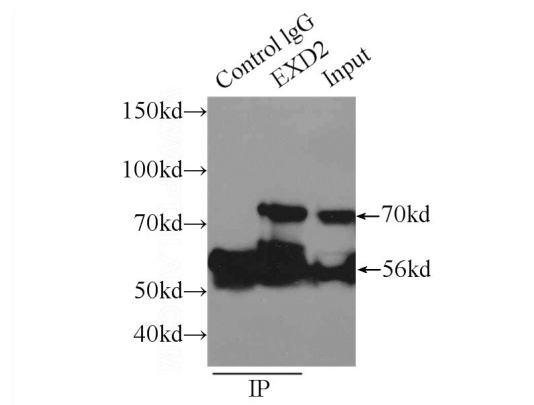
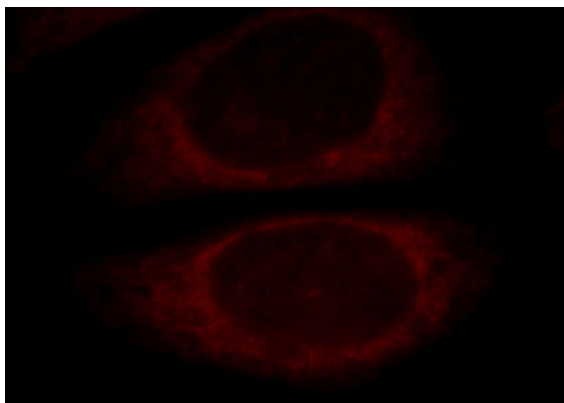
mouse lung tissue were subjected to SDS PAGE followed by western blot with Catalog No:110498(EXD2 antibody) at dilution of 1:300



Immunohistochemical of paraffin-embedded human testis using Catalog No:110498(EXD2 antibody) at dilution of 1:50 (under 10x lens)

EXD2 antibody

Catalog Number: 110498



Immunofluorescent analysis of HepG2 cells, using EXD2 antibody Catalog No:110498 at 1:25 dilution and Rhodamine-labeled goat anti-rabbit IgG (red).

IP Result of anti-EXD2 (IP:Catalog No:110498, 3ug; Detection:Catalog No:110498 1:300) with mouse lung tissue lysate 5160ug.