

Anti-MRPL50 antibody



Catalog Number: 176098

Product name

Anti-MRPL50 antibody

Specificity

Human

Antibody description

Rabbit polyclonal antibody to MRPL50

Preparation

This antigen of this antibody was the antiserum was produced against synthesized peptide derived from human mrpl50. aa range:109-158

Formulation

Liquid, Liquid in PBS containing 50% glycerol, 0.5% BSA and 0.02% sodium azide.

Storage

Store at +4°C after thawing. Aliquot store at -20°C or -80°C. Avoid repeated freeze / thaw cycles.

Clonality

Polyclonal

Ig Type

Rabbit IgG

Applications

WB

Dilutions

WB: 1:500-1:2000

Validations

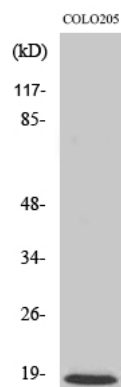


Fig1.; Western Blot analysis of various cells using MRP-L50 Polyclonal Antibody