

# GMF-beta antibody



Catalog Number: 111098

## Product name

GMF-beta antibody

## Specificity

Human, Mouse, Rat; other species not tested.

## Antibody description

GMF-beta Rabbit Polyclonal antibody. Positive IHC detected in human colon cancer tissue. Positive WB detected in rat brain tissue, human brain tissue, human heart tissue, mouse brain tissue, mouse heart tissue. Observed molecular weight by Western-blot: 17 kDa

## Preparation

This antibody was obtained by immunization of GMF-beta recombinant protein (Accession Number: BC005359). Purification method: Antigen affinity purified.

## Formulation

PBS with 0.1% sodium azide and 50% glycerol pH 7.3.

## Storage

Store at -20°C. DO NOT ALIQUOT

## Clonality

Polyclonal

## Ig Type

Rabbit IgG

## Applications

ELISA, IHC, WB

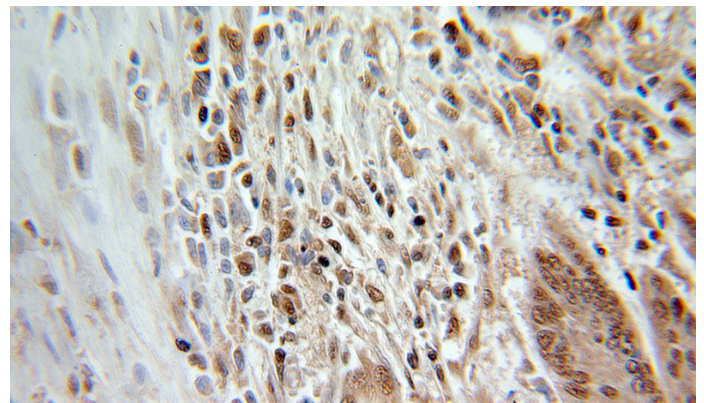
## Dilutions

Recommended Dilution:

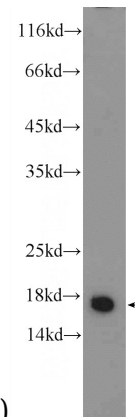
WB: 1:200-1:2000

IHC: 1:20-1:200

## Validations



Immunohistochemical of paraffin-embedded human colon cancer using Catalog No:111098(GMFB antibody) at dilution of 1:100



(under 25x lens)

rat brain tissue were subjected to SDS PAGE followed by western blot with Catalog No:111098(GMFB Antibody) at dilution of 1:500