

Mouse KLRB1F (Fc Tag) recombinant protein



Catalog Number: 500098

General Information

Gene Name Synonym

CD161 antigen-like family member F; Natural killer cell surface protein NKR-P1F

Protein Construction

A DNA sequence encoding the extracellular domain of mouse KLRB1F (Q8VD98) (Gln 67-Val 217) was fused with the Fc region of human IgG1 at the N-terminus.

Organism

Mouse

Expression Host

Human Cells

QC Testing

Purity

> 88 % as determined by SDS-PAGE

Endotoxin

< 1.0 EU per μg of the protein as determined by the LAL method

Stability

Samples are stable for up to twelve months from date of receipt at -70°C

Predicted N terminal

Glu

Molecular Mass

The recombinant mouse KLRB1F/Fc is a disulfide-

linked homodimer. The reduced monomer comprises 411 amino acids and has a calculated molecular mass of 46 kDa. As a result of glycosylation, the apparent molecular mass of the monomer is approximately 52 kDa in SDS-PAGE under reducing conditions.

Formulation

Lyophilized from sterile PBS, pH 7.4

1. 5 % trehalose and mannitol are added as protectants before lyophilization.

2. Please contact us for any concerns or special requirements.

Usage Guide

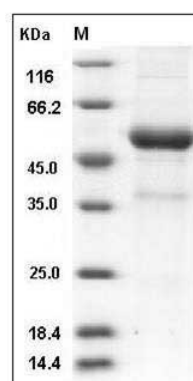
Storage

Store it under sterile conditions at -20°C to -80°C . It is recommended that the protein be aliquoted for optimal storage. Avoid repeated freeze-thaw cycles.

Reconstitution

Adding sterile water, prepare a stock solution of 0.25 mg/ml. Concentration is measured by UV-Vis.

SDS-PAGE



Mouse KLRB1F / NKR-P1F Protein (Fc Tag) SDS-PAGE