

Anti-Six2 antibody



Catalog Number: 175788

Product name

Anti-Six2 antibody

Specificity

Mouse

Antibody description

Rabbit polyclonal antibody to Six2

Preparation

This antigen of this antibody was synthetic peptide within mouse six2 aa 100-160.

Formulation

Liquid, 1*TBS (pH7.4), 0.2% BSA, 50% Glycerol.
Preservative: 0.05% Sodium Azide.

Storage

Store at +4°C after thawing. Aliquot store at -20°C. Avoid repeated freeze / thaw cycles.

Clonality

Polyclonal

Ig Type

Rabbit IgG

Applications

WB

Dilutions

WB: 1:500

Validations

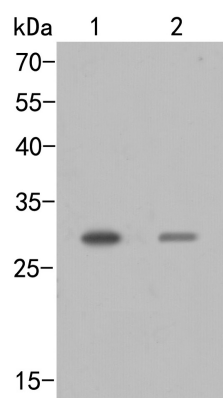


Fig1:; Western blot analysis of SIX2 on different lysates. Proteins were transferred to a PVDF membrane and blocked with 5% BSA in PBS for 1 hour at room temperature. The primary antibody (1/500) was used in 5% BSA at room temperature for 2 hours. Goat Anti-Rabbit IgG - HRP Secondary Antibody (HA1001) at 1:5,000 dilution was used for 1 hour at room temperature.; Positive control:; Lane 1: Mouse kidney tissue lysate; Lane 2: Mouse stomach tissue lysate