

General Information

Protein Construction

A DNA sequence encoding the human SMPD1 (BAD93012.1) (Met1-Pro628) was expressed with a polyhistidine tag at the C-terminus.

Organism

Human

Expression Host

Baculovirus-Insect Cells

QC Testing

Purity

> 95 % as determined by SDS-PAGE.

Endotoxin

< 1.0 EU per μg protein as determined by the LAL method.

Stability

Samples are stable for up to twelve months from date of receipt at -70°C

Predicted N terminal

Leu 47

Molecular Mass

The recombinant human SMPD1 consists of 593 amino acids and predicts a molecular mass of 66.3

kDa.

Formulation

Lyophilized from sterile 20 mM Tris, 500 mM NaCl, 25 % glycerol, pH 7.5.

1. 5 % trehalose and mannitol are added as protectants before lyophilization.
2. Please contact us for any concerns or special requirements.

Usage Guide

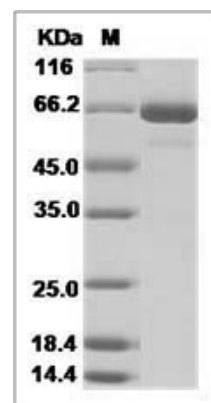
Storage

Store it under sterile conditions at -20°C to -80°C . It is recommended that the protein be aliquoted for optimal storage. Avoid repeated freeze-thaw cycles.

Reconstitution

Adding sterile water, prepare a stock solution of 0.25 mg/ml. Concentration is measured by UV-Vis.

SDS-PAGE



Human SMPD1 Protein (His Tag)