

Anti-ZNF420 antibody



Catalog Number: 176388

Product name

Anti-ZNF420 antibody

Ig Type

Rabbit IgG

Specificity

Human, Mouse

Applications

WB

Antibody description

Rabbit polyclonal antibody to ZNF420

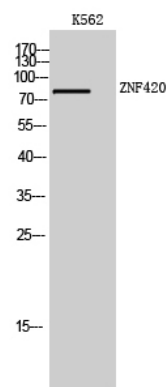
Dilutions

WB: 1:500-1:2000

Preparation

This antigen of this antibody was the antiserum was produced against synthesized peptide derived from human znf420. aa range:301-350

Validations



Formulation

Liquid, Liquid in PBS containing 50% glycerol, 0.5% BSA and 0.02% sodium azide.

Storage

Store at +4°C after thawing. Aliquot store at -20°C or -80°C. Avoid repeated freeze / thaw cycles.

Clonality

Polyclonal

Fig1.; Western Blot analysis of K562 cells using ZNF420 Polyclonal Antibody. Secondary antibody [catalog#: HA1001) was diluted at 1:20000 cells nucleus extracted by Minute TM Cytoplasmic and Nuclear Fractionation kit (SC-003, Invent biotech, MN, USA).