

General Information

Protein Construction

A DNA sequence encoding the cynomolgus CXCL7 (XP_005555138.1) (Ser35-Asp128) was expressed with a polyhistidine tag at the C-terminus. Cynomolgus and Rhesus CXCL7 sequences are identical.

Organism

Cynomolgus

Expression Host

Yeast

QC Testing

Purity

> 95 % as determined by SDS-PAGE.

Endotoxin

Please contact us for more information.

Stability

Samples are stable for up to twelve months from date of receipt at -70°C

Predicted N terminal

Ser 35

Molecular Mass

The recombinant cynomolgus CXCL7 consists of 104 amino acids and predicts a molecular mass of

11.7 kDa.

Formulation

Lyophilized from sterile 30 % CAN, 0.1 % TFA. 1. 5 % trehalose and mannitol are added as protectants before lyophilization. 2. Please contact us for any concerns or special requirements.

Usage Guide

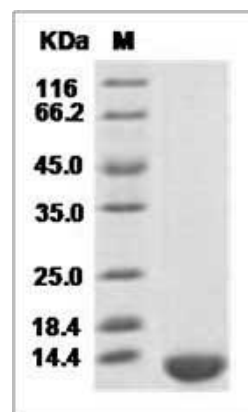
Storage

Store it under sterile conditions at -20°C to -80°C. It is recommended that the protein be aliquoted for optimal storage. Avoid repeated freeze-thaw cycles.

Reconstitution

Adding sterile water, prepare a stock solution of 0.25 mg/ml. Concentration is measured by UV-Vis.

SDS-PAGE



Cynomolgus / Rhesus NAP-2 / PPBP / CXCL7 Protein (His Tag)