

NSUN2 antibody



Catalog Number: 113388

Product name

NSUN2 antibody

Specificity

Human, Mouse; other species not tested.

Antibody description

NSUN2 Rabbit Polyclonal antibody. Positive WB detected in HEK-293, COLO 320 cells, HeLa cells, HepG2 cells, MCF7 cells, SH-SY5Y cells. Positive IP detected in HeLa cells. Positive IF detected in HeLa cells, HepG2 cells. Positive IHC detected in human breast cancer tissue, human testis tissue. Observed molecular weight by Western-blot: 90-100 kDa

Preparation

This antibody was obtained by immunization of NSUN2 recombinant protein (Accession Number: BC001041). Purification method: Antigen affinity purified.

Formulation

PBS with 0.02% sodium azide and 50% glycerol pH 7.3.

Storage

Store at -20°C. DO NOT ALIQUOT

Clonality

Polyclonal

Ig Type

Rabbit IgG

Applications

ELISA, IHC, IF, IP, WB

Dilutions

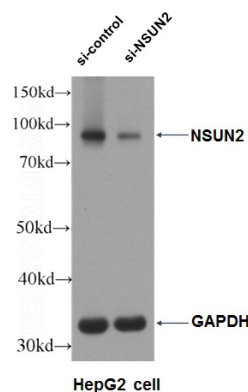
Recommended Dilution:

WB: N/AIP: 1:500-1:5000

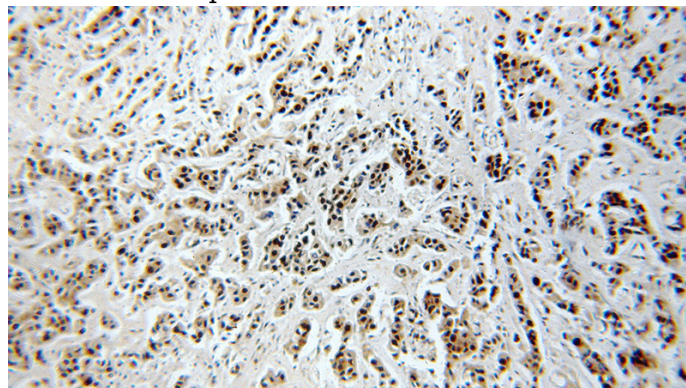
IHC: 1:20-1:200

IF: 1:10-1:100

Validations



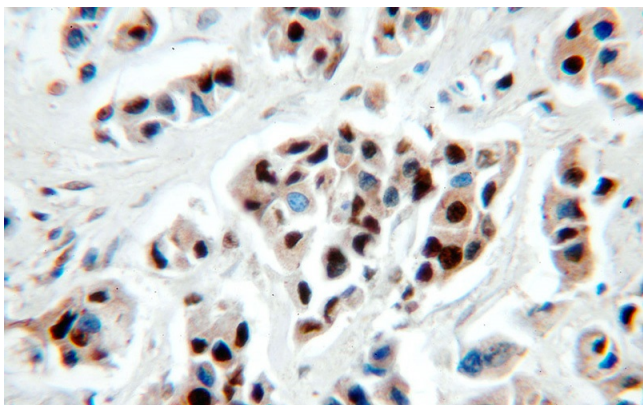
WB result of NSUN2 antibody (Catalog No:113388, 1:5000) with si-Control and si-NSUN2 transfected HepG2 cells.



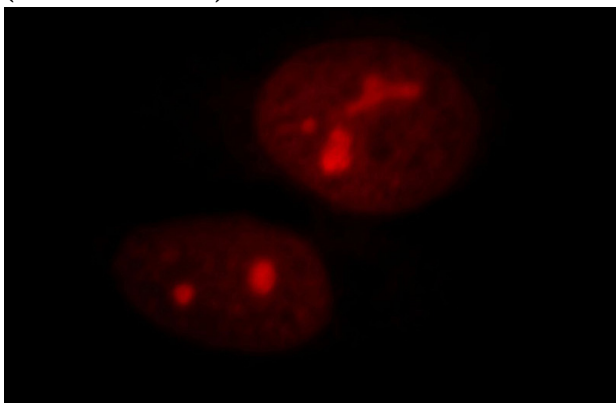
Immunohistochemical of paraffin-embedded human breast cancer using Catalog No:113388(NSUN2 antibody) at dilution of 1:100 (under 10x lens)

NSUN2 antibody

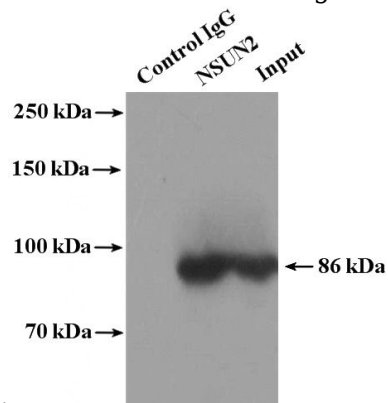
Catalog Number: 113388



Immunohistochemical of paraffin-embedded human breast cancer using Catalog No:113388(NSUN2 antibody) at dilution of 1:100 (under 40x lens)



Immunofluorescent analysis of HeLa cells, using NSUN2 antibody Catalog No:113388 at 1:25 dilution and Rhodamine-labeled goat anti-rabbit



IgG (red).

IP Result of anti-NSUN2 (IP:Catalog No:113388, 4ug; Detection:Catalog No:113388 1:1000) with HeLa cells lysate 4000ug.