

# MAGEC3 antibody



Catalog Number: 112388

## Product name

MAGEC3 antibody

IHC: 1:20-1:200

IF: 1:20-1:200

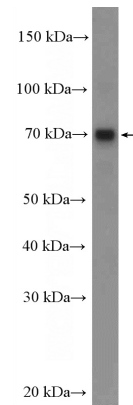
## Specificity

Human, Mouse; other species not tested.

## Validations

## Antibody description

MAGEC3 Rabbit Polyclonal antibody. Positive WB detected in A375 cells, mouse thymus tissue. Positive IF detected in A375 cells. Positive IHC detected in human liver cancer tissue. Observed molecular weight by Western-blot: 70-72 kDa



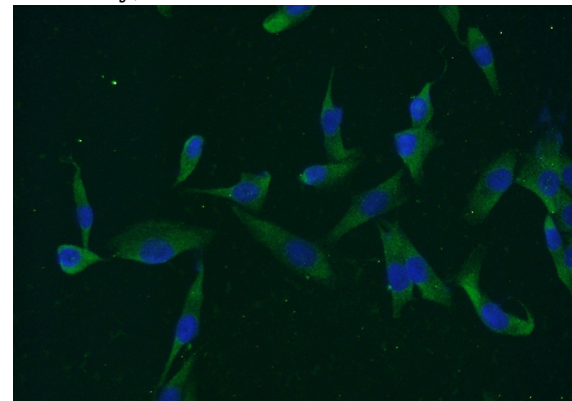
## Preparation

This antibody was obtained by immunization of MAGEC3 recombinant protein (Accession Number: XM\_011531267). Purification method: Antigen affinity purified.

A375 cells were subjected to SDS PAGE followed by western blot with Catalog No:112388(MAGEC3 Antibody) at dilution of 1:600

## Formulation

PBS with 0.02% sodium azide and 50% glycerol pH 7.3.



## Storage

Store at -20°C. DO NOT ALIQUOT

## Clonality

Polyclonal

## Ig Type

Rabbit IgG

## Applications

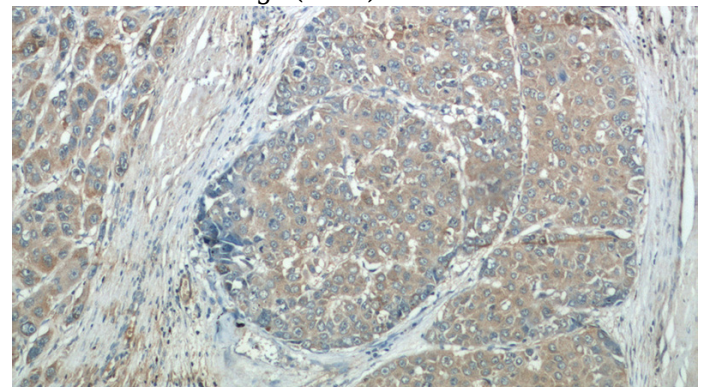
ELISA, IHC, IF, WB

## Dilutions

Recommended Dilution:

WB: 1:200-1:2000

Immunofluorescent analysis of A375 cells using Catalog No:112388(MAGEC3 Antibody) at dilution of 1:50 and Alexa Fluor 488-conjugated AffiniPure Goat Anti-Rabbit IgG(H+L)



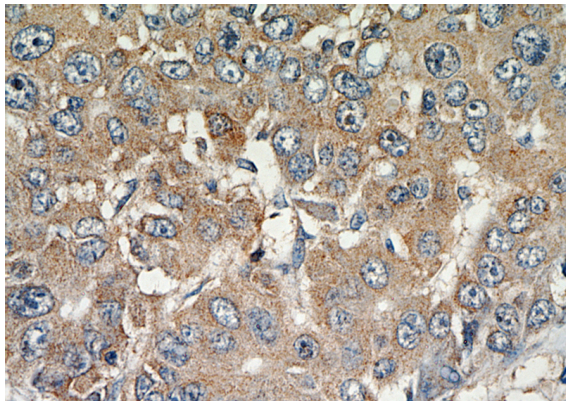
Immunohistochemical of paraffin-embedded

# MAGEC3 antibody

Catalog Number: 112388

---

human liver cancer using Catalog  
No:112388(MAGEC3 antibody) at dilution of 1:50  
(under 10x lens)



Immunohistochemical of paraffin-embedded  
human liver cancer using Catalog  
No:112388(MAGEC3 antibody) at dilution of 1:50  
(under 40x lens)