

CYP26B1 antibody



Catalog Number: 109688

Product name

CYP26B1 antibody

WB: 1:200-1:2000

IP: 1:200-1:2000

Specificity

Human, Mouse, Rat; other species not tested.

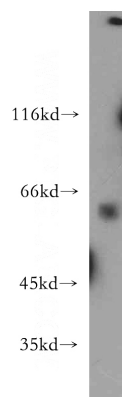
IHC: 1:20-1:200

IF: 1:10-1:100

Antibody description

CYP26B1 Rabbit Polyclonal antibody. Positive IHC detected in human hepatocirrhosis tissue, human heart tissue. Positive IF detected in HepG2 cells. Positive IP detected in L02 cells. Positive WB detected in human brain tissue, L02 cells. Observed molecular weight by Western-blot: 58-60 kDa

Validations



Preparation

This antibody was obtained by immunization of CYP26B1 recombinant protein (Accession Number: NM_019885). Purification method: Antigen affinity purified.

human brain tissue were subjected to SDS PAGE followed by western blot with Catalog No:109688(CYP26B1 antibody) at dilution of 1:500

Formulation

PBS with 0.02% sodium azide and 50% glycerol pH 7.3.

Storage

Store at -20°C. DO NOT ALIQUOT

Clonality

Polyclonal

Ig Type

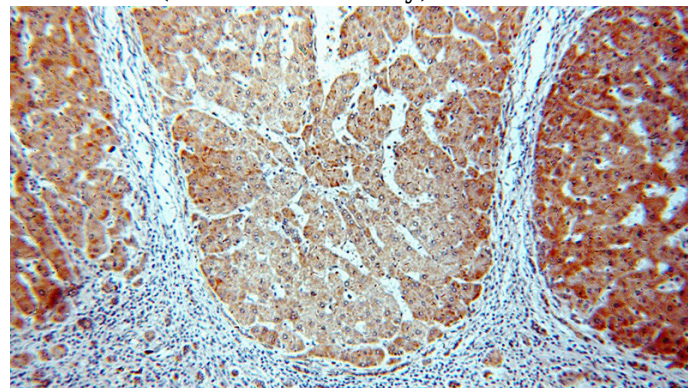
Rabbit IgG

Applications

ELISA, WB, IHC, IF, IP

Dilutions

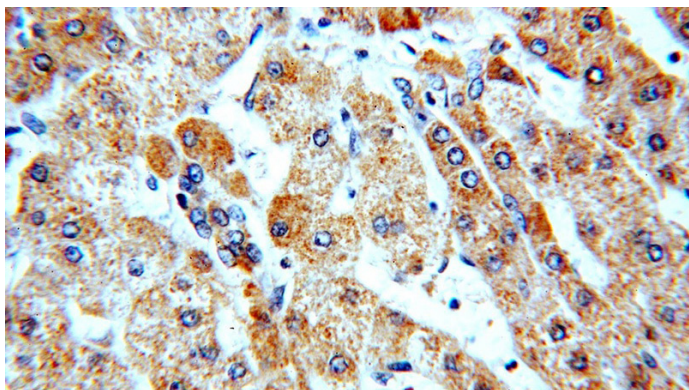
Recommended Dilution:



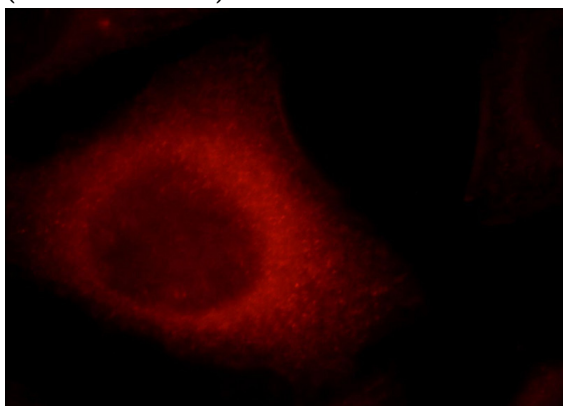
Immunohistochemical of paraffin-embedded human hepatocirrhosis using Catalog No:109688(CYP26B1 antibody) at dilution of 1:50 (under 10x lens)

CYP26B1 antibody

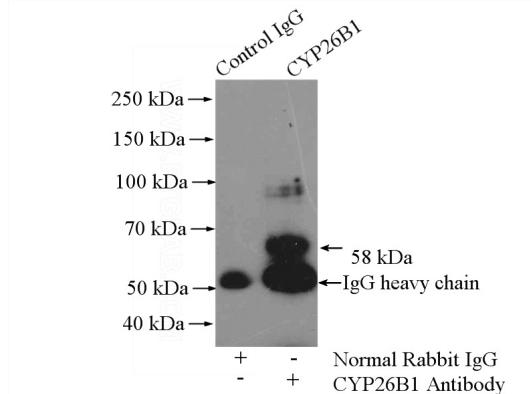
Catalog Number: 109688



Immunohistochemical of paraffin-embedded human hepatocirrhosis using Catalog No:109688(CYP26B1 antibody) at dilution of 1:50 (under 40x lens)



Immunofluorescent analysis of HepG2 cells, using CYP26B1 antibody Catalog No:109688 at 1:25 dilution and Rhodamine-labeled goat anti-rabbit



IgG (red).

IP Result of anti-CYP26B1 (IP:Catalog No:109688, 4ug; Detection:Catalog No:109688 1:500) with L02 cells lysate 2400ug.