

# Anti-LIS1 Rabbit antibody



Catalog Number: 168688

## Product name

Anti-LIS1 Rabbit antibody

## Specificity

Human, Mouse, Rat

## Antibody description

LIS1 Rabbit monoclonal antibody

## Preparation

Antigen: A synthetic peptide of human LIS1

## Formulation

50nM Tris-Glycine(pH 7.4), 0.15M NaCl, 40%Glycerol, 0.01% sodium azide and 0.05% BSA.

## Storage

Store at 4°C short term. Store at -20°C long term. Avoid freeze / thaw cycle.

## Clonality

Monoclonal

## Ig Type

Rabbit IgG

## Applications

WB, FC, IP

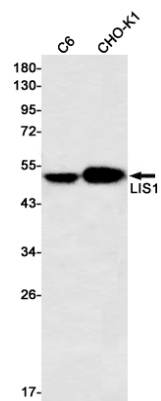
## Dilutions

WB: 1/1000-1/5000

FC: 1/100-1/500

IP: 1/20

## Validations



Western blot detection of LIS1 in C6,CHO-K1 cell lysates using LIS1 Rabbit mAb(1:500 diluted).Predicted band size:47kDa.Observed band size:47kDa.