

Anti-DPPA3 antibody



Catalog Number: 176688

Product name

Anti-DPPA3 antibody

Specificity

Human, Mouse

Antibody description

Rabbit polyclonal antibody to DPPA3

Preparation

This antigen of this antibody was synthetic peptide within c-terminal mouse stella.

Formulation

Liquid, 1*PBS (pH7.4), 0.2% BSA, 40% Glycerol.
Preservative: 0.05% Sodium Azide.

Storage

Store at +4°C after thawing. Aliquot store at -20°C or -80°C. Avoid repeated freeze / thaw cycles.

Clonality

Polyclonal

Ig Type

Rabbit IgG

Applications

WB, IHC-P

Dilutions

WB: 1:2,000-1:5,000

IHC-P: 1:100-1:200

Validations

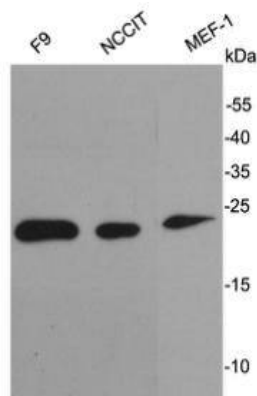


Fig1: Western blot analysis on cell lysates using anti-Stella rabbit polyclonal antibodies.

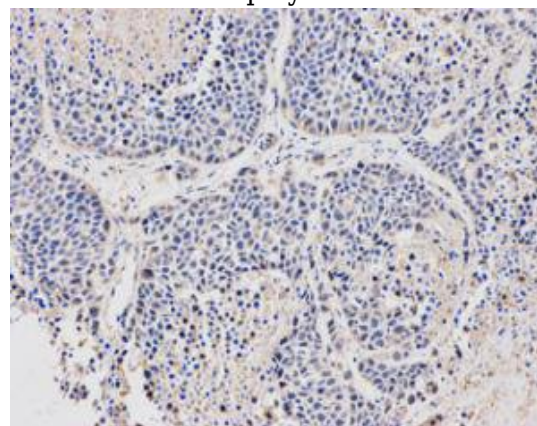


Fig2: Immunohistochemical analysis of paraffin-embedded mouse teratoma tissue using anti-Stella rabbit polyclonal antibody.