

STAT3 antibody

Catalog Number: 115688

Product name

STAT3 antibody

Specificity

Human, Mouse, Rat; other species not tested.

Antibody description

STAT3 Rabbit Polyclonal antibody. Positive WB detected in HeLa cells, A431 cells, A549 cells, Jurkat cells, K-562 cells, MCF7 cells, mouse brain tissue, mouse heart tissue, mouse lung tissue, mouse thymus tissue, NIH/3T3 cells, rat brain tissue. Positive IP detected in HeLa cells. Positive FC detected in HeLa cells. Positive IHC detected in human cervical cancer tissue, human breast cancer tissue. Positive IF detected in HeLa cells. Observed molecular weight by Western-blot: 88 kDa

Preparation

This antibody was obtained by immunization of STAT3 recombinant protein (Accession Number: XM_017024975). Purification method: Antigen affinity purified.

Formulation

PBS with 0.1% sodium azide and 50% glycerol pH 7.3.

Storage

Store at -20°C. DO NOT ALIQUOT

Clonality

Polyclonal

Ig Type

Rabbit IgG

Applications

ELISA, WB, IHC, IF, FC, IP

Dilutions

Recommended Dilution:

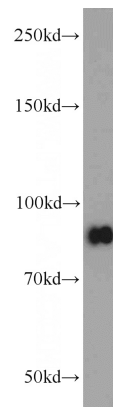
WB: 1:1000-1:10000

IP: 1:1000-1:10000

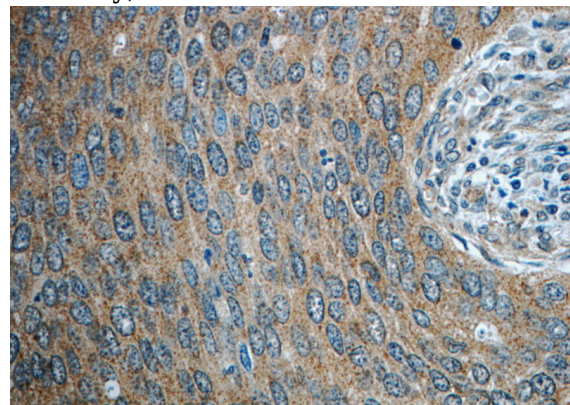
IHC: 1:20-1:200

IF: 1:10-1:100

Validations



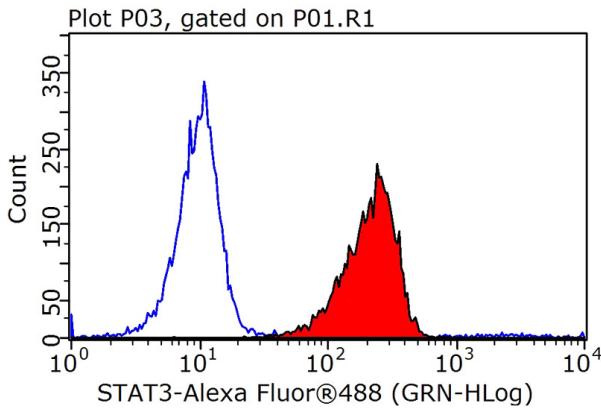
HeLa cells were subjected to SDS PAGE followed by western blot with Catalog No:115688(STAT3 antibody) at dilution of 1:4000



Immunohistochemistry of paraffin-embedded human cervical cancer slide using Catalog No:115688(STAT3 Antibody) at dilution of 1:50

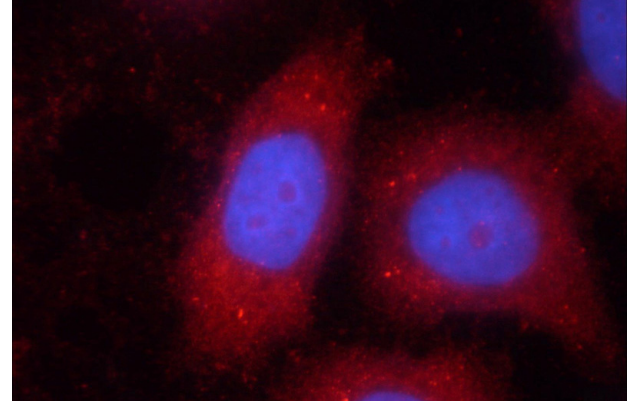
STAT3 antibody

Catalog Number: 115688



1X10⁶ HeLa cells were stained with 0.2ug STAT3 antibody (Catalog No:115688, red) and control antibody (blue). Fixed with 90% MeOH blocked with 3% BSA (30 min). Alexa Fluor 488-conjugated AffiniPure Goat Anti-Rabbit IgG(H+L) with dilution 1:1000.

IP Result of anti-STAT3 (IP:Catalog No:115688, 3ug; Detection:Catalog No:115688 1:2000) with HeLa cells lysate 3000ug.



Immunofluorescent analysis of HeLa cells using Catalog No:115688(STAT3 Antibody) at dilution of 1:25 and Rhodamine-Goat anti-Rabbit IgG

