

Anti-METAP2 antibody



Catalog Number: 142688

Product name

Anti-METAP2 antibody

Immunogen

[Human MAP2 \(His Tag\) recombinant protein](#)

Specificity

Human MAP2 / METAP2

Antibody description

Rabbit Polyclonal to Human METAP2

Preparation

Produced in rabbits immunized with purified, recombinant Human MAP2 / METAP2 . MAP2 / METAP2 specific IgG was purified by Human MAP2 / METAP2 affinity chromatography.

Formulation

0.2 µm filtered solution in PBS

Storage

This antibody can be stored at 2°C-8°C for one month without detectable loss of activity. Antibody products are stable for twelve months from date of receipt when stored at -20°C to -80°C.

Preservative-Free.

Sodium azide is recommended to avoid contamination (final concentration 0.05%-0.1%). It is toxic to cells and should be disposed of properly. Avoid repeated freeze-thaw cycles.

Clonality

Polyclonal

Ig Type

Rabbit IgG

Applications

WB, ELISA, IHC-P, IP

Dilutions

WB: 5-20 µg/ml

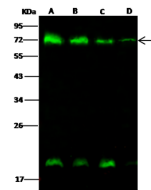
ELISA: 0.1-0.2 µg/ml

This antibody can be used at 0.1-0.2 µg/ml with the appropriate secondary reagents to detect Human MAP2 / METAP2.

IHC-P: 0.1-1 µg/mL

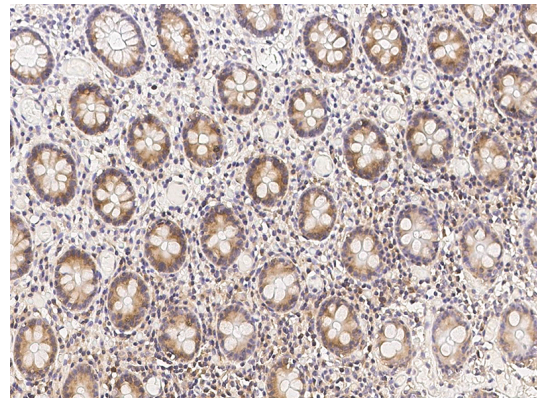
IP: 4-8 µl/mg of lysate

Validations



Lanes	A	B	C	D
Sample (whole cell lysate)	HepG2	293T	HeLa	PC12
Sample Volume (µg/lane)	30	30	30	30
Gel	13% SDS-PAGE reducing gel			
Recommended Concentration	5-20 µg/ml			
Secondary Antibody	DyLight 800-labeled Antibody to Rabbit IgG (H+), at 1:5000 dilution.			
Explanation	Developed using Odyssey imaging system. Predicted band size : 52 kDa Observed band size : 72 kDa Additional bands at : 20 kDa (We are unsure as to the identity of these extra bands.)			

Human MAP2 Western blot (WB) 14689



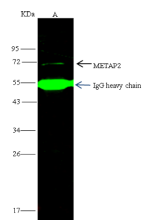
Human MAP2 Immunohistochemistry(IHC) 14690

Anti-METAP2 antibody



Catalog Number: 142688

Human MAP2 Immunoprecipitation(IP) 14691



Items	Lanes	A
Sample (whole cell lysate)		HepG2
Sample quantity		0.5 mg
IP antibody quantity		4 μ L
Protein G agarose		15 μ l of 50% Protein G agarose
Gel		10% SDS-PAGE reducing gel
Primary antibody		METAP2 antibody at 10 μ g/ml
Secondary antibody		Dylight 800-labeled antibody to rabbit IgG (H+L), at 1:5000 dilution