

# SKIV2L2 antibody

Catalog Number: 115288

## Product name

SKIV2L2 antibody

## Specificity

Human, Mouse, Rat; other species not tested.

## Antibody description

SKIV2L2 Rabbit Polyclonal antibody. Positive IP detected in mouse testis tissue. Positive WB detected in mouse thymus tissue, human brain tissue, mouse testis tissue. Observed molecular weight by Western-blot: 118 kDa

## Preparation

This antibody was obtained by immunization of SKIV2L2 recombinant protein (Accession Number: NM\_015360). Purification method: Antigen affinity purified.

## Formulation

PBS with 0.1% sodium azide and 50% glycerol pH 7.3.

## Storage

Store at -20°C. DO NOT ALIQUOT

## Clonality

Polyclonal

## Ig Type

Rabbit IgG

## Applications

ELISA, WB, IP

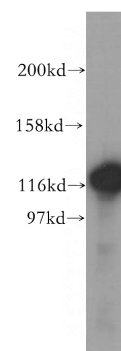
## Dilutions

Recommended Dilution:

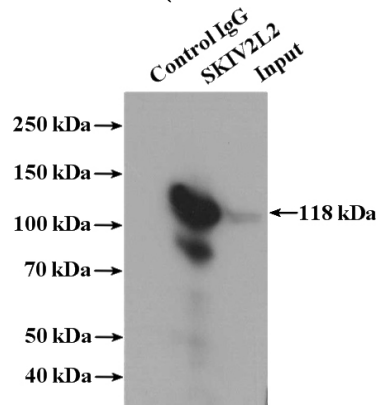
WB: 1:500-1:5000

IP: 1:200-1:1000

## Validations



mouse thymus tissue were subjected to SDS PAGE followed by western blot with Catalog No:115288(SKIV2L2 antibody) at dilution of 1:400



IP Result of anti-SKIV2L2 (IP:Catalog No:115288, 4ug; Detection:Catalog No:115288 1:300) with mouse testis tissue lysate 4000ug.