

# Hemoglobin epsilon antibody



Catalog Number: 111288

## Product name

Hemoglobin epsilon antibody

## Immunogen

[Human HBE1 Recombinant protein \(GST tag\)](#)

## Specificity

Human, Mouse, Rat; other species not tested.

## Antibody description

Hemoglobin epsilon Rabbit Polyclonal antibody. Positive FC detected in K-562 cells. Positive IHC detected in human placenta tissue. Positive WB detected in human placenta tissue, K-562 cells, mouse placenta tissue. Observed molecular weight by Western-blot: 12-16 kDa

## Preparation

This antibody was obtained by immunization of Hemoglobin epsilon recombinant protein (Accession Number: NM\_005330). Purification method: Antigen affinity purified.

## Formulation

PBS with 0.1% sodium azide and 50% glycerol pH 7.3.

## Storage

Store at -20°C. DO NOT ALIQUOT

## Clonality

Polyclonal

## Ig Type

Rabbit IgG

## Applications

ELISA, WB, IHC, FC

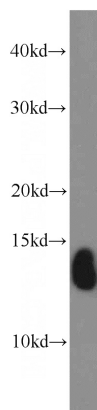
## Dilutions

Recommended Dilution:

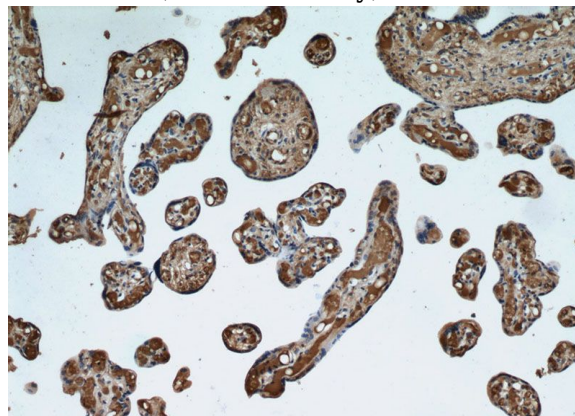
WB: 1:500-1:5000

IHC: 1:20-1:200

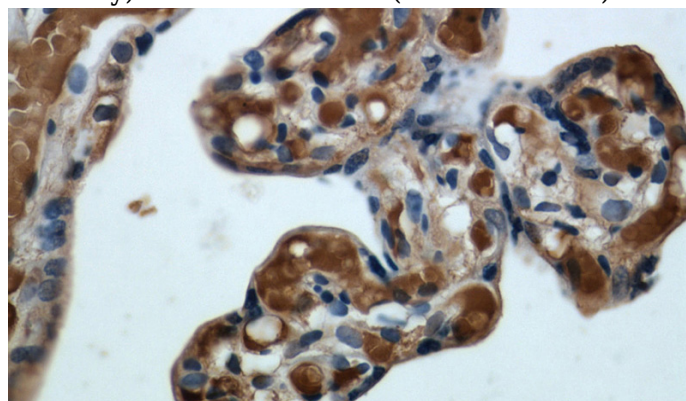
## Validations



human placenta tissue were subjected to SDS PAGE followed by western blot with Catalog No:111288(HBE1 antibody) at dilution of 1:1000



Immunohistochemical of paraffin-embedded human placenta using Catalog No:111288(HBE1 antibody) at dilution of 1:50 (under 10x lens)



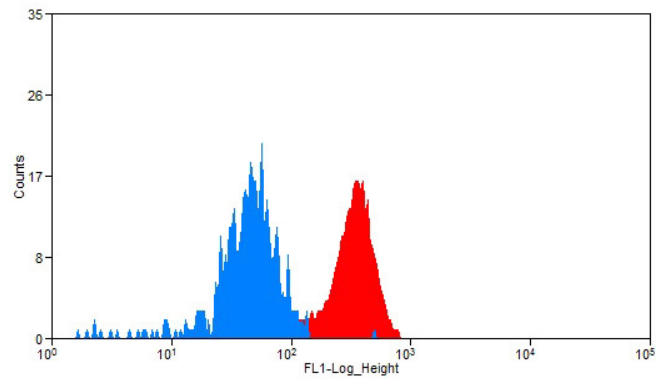
# Hemoglobin epsilon antibody



Catalog Number: 111288

---

Immunohistochemical of paraffin-embedded human placenta using Catalog No:111288(HBE1 antibody) at dilution of 1:50 (under 40x lens)



1X10<sup>6</sup> K-562 cells were stained with 0.2ug HBE1 antibody (Catalog No:111288, red) and control antibody (blue). Fixed with 90% MeOH blocked with 3% BSA (30 min). Alexa Fluor 488-conjugated AffiniPure Goat Anti-Rabbit IgG(H+L) with dilution 1:1500.