

Anti-Superoxide Dismutase 1 Rabbit antibody



Catalog Number: 167988

Product name

Rabbit IgG

Anti-Superoxide Dismutase 1 Rabbit antibody

Applications

Specificity

WB, IHC-P, ICC/IF, FC

Human

Dilutions

Antibody description

WB: 1/1000

Superoxide Dismutase 1 Rabbit monoclonal antibody

IHC: 1/500

ICC/IF: 1/20

Preparation

FC: 1/50

Antigen: Recombinant protein of human Superoxide Dismutase 1

Validations

Formulation

50nM Tris-Glycine(pH 7.4), 0.15M NaCl, 40%Glycerol, 0.01% sodium azide and 0.05% BSA

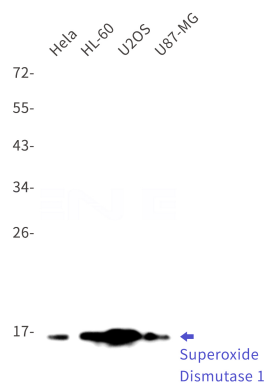
Storage

Store at 4°C short term. Store at -20°C long term. Avoid freeze / thaw cycle.

Clonality

Monoclonal

Ig Type



Western blot detection of Superoxide Dismutase 1 in HeLa,HL-60,U2OS,U87-MG cell lysates using Superoxide Dismutase 1 Rabbit mAb(1:1000 diluted).Predicted band size:16kDa.Observed band size:16kDa.