

# Rat Syndecan-1/SDC1/CD138 (Fc Tag) recombinant protein



Catalog Number: 502988

## General Information

### Protein Construction

A DNA sequence encoding the rat SDC1 (P26260) (Met1-Lys253) was expressed, fused with the Fc region of human IgG1 at the C-terminus.

### Organism

Rat

### Expression Host

Human Cells

## QC Testing

### Activity

1. Measured by its binding ability in a functional ELISA. Immobilized human PTN (Cat:501387) at 10 µg/ml (100 µl/well) can bind rat SDC1-Fc (Cat:502988), The EC<sub>50</sub> of rat SDC1-Fc (Cat:502988) is 0.35-0.81 µg/ml.
2. Measured by its binding ability in a functional ELISA. Immobilized mouse PTN (Cat:504073) at 10 µg/ml (100 µl/well) can bind rat SDC1-Fc, The EC<sub>50</sub> of rat SDC1-Fc is 0.4-1.1 µg/ml.

### Purity

> 90 % as determined by SDS-PAGE

### Endotoxin

< 1.0 EU per µg of the protein as determined by the LAL method

### Stability

Samples are stable for up to twelve months from date of receipt at -70°C

### Predicted N terminal

Gln 23

### Molecular Mass

The recombinant rat SDC1/Fc is a disulfide-linked homodimer. The reduced monomer comprises 472 amino acids and has a predicted molecular mass of 51.2 kDa. The apparent molecular mass of the protein is approximately 92 kDa in SDS-PAGE under reducing conditions.

### Formulation

- Lyophilized from sterile PBS, pH 7.4
1. 5 % trehalose and mannitol are added as protectants before lyophilization.
  2. Please contact us for any concerns or special requirements.

## Usage Guide

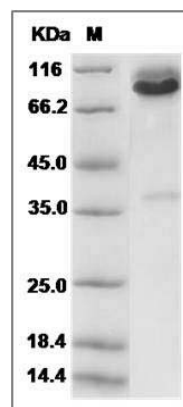
### Storage

Store it under sterile conditions at -20°C to -80°C. It is recommended that the protein be aliquoted for optimal storage. Avoid repeated freeze-thaw cycles.

### Reconstitution

Adding sterile water, prepare a stock solution of 0.25 mg/ml. Concentration is measured by UV-Vis.

### SDS-PAGE



Rat Syndecan-1 / SDC1 / CD138 Protein (Fc Tag)  
SDS-PAGE