

# GUCY2F Polyclonal Antibody



Catalog Number: 161988

## Product name

GUCY2F Polyclonal Antibody

## Specificity

Mouse, Rat

## Antibody description

Polyclonal antibody to GUCY2F

## Preparation

Antigen: Recombinant fusion protein containing a sequence corresponding to amino acids 250-460 of human GUCY2F (NP\_001513.2).

## Formulation

PBS with 0.02% sodium azide, 50% glycerol, pH7.3.

## Storage

Store at -20°C. Avoid freeze / thaw cycles.

## Clonality

Polyclonal

## Ig Type

Rabbit IgG

## Applications

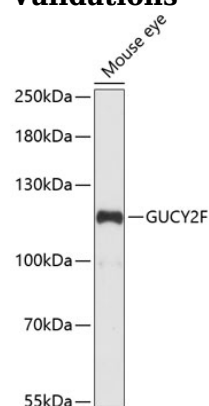
WB, IF

## Dilutions

WB 1:500 - 1:2000

IF 1:50 - 1:100

## Validations



Western blot - GUCY2F Polyclonal Antibody

Western blot analysis of extracts of mouse eye, using GUCY2F antibody at 1:1000 dilution. Secondary antibody: HRP Goat Anti-Rabbit IgG (H+L) at 1:10000 dilution. Lysates/proteins: 25ug per lane. Blocking buffer: 3% nonfat dry milk in TBST. Detection: ECL Basic Kit. Exposure time: 90s.