

General Information

Gene Name Synonym

CRP

Protein Construction

A DNA sequence encoding the rat CRP (NP_058792.1) extracellular domain (Met 1-Ser 230) was fused with a polyhistidine tag at the C-terminus.

Organism

Rat

Expression Host

Human Cells

QC Testing

Purity

> 97 % as determined by SDS-PAGE

Endotoxin

< 1.0 EU per μg of the protein as determined by the LAL method

Stability

Samples are stable for up to twelve months from date of receipt at -70°C

Predicted N terminal

Glu 21

Molecular Mass

The recombinant rat CRP comprises 221 amino acids and predicts a molecular mass of 24.6 kDa. The apparent molecular mass of the rat CRP is approximately 30 kDa in SDS-PAGE under reducing conditions.

Formulation

Lyophilized from sterile PBS, pH 7.4

1. 5 % trehalose and mannitol are added as protectants before lyophilization.
2. Please contact us for any concerns or special requirements.

Usage Guide

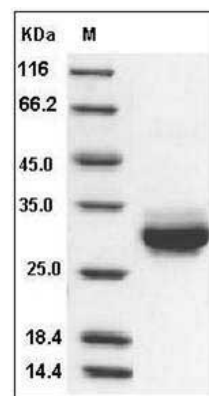
Storage

Store it under sterile conditions at -20°C to -80°C . It is recommended that the protein be aliquoted for optimal storage. Avoid repeated freeze-thaw cycles.

Reconstitution

Adding sterile water, prepare a stock solution of 0.25 mg/ml. Concentration is measured by UV-Vis.

SDS-PAGE



Rat CRP / C-Reactive Protein (His Tag) SDS-PAGE