

Anti-CSRP1 antibody



Catalog Number: 100988

Product name

Anti-CSRP1 antibody

Immunogen

[Mouse CSRP1 \(His Tag\) recombinant protein](#)

Specificity

Mouse CSRP1

Antibody description

Rabbit polyclonal to CSRP1

Preparation

Produced in rabbits immunized with purified, recombinant Mouse CSRP1 (rh CSRP1; P97315; Met1-Glu193). CSRP1 specific IgG was purified by Mouse CSRP1 affinity chromatography.

Formulation

0.2 μm filtered solution in PBS

Storage

This antibody can be stored at 2°C-8°C for one month without detectable loss of activity. Antibody products are stable for twelve months from date of receipt when stored at -20°C to -80°C.

Preservative-Free.

Sodium azide is recommended to avoid contamination (final concentration 0.05%-0.1%). It is toxic to cells and should be disposed of properly. Avoid repeated freeze-thaw cycles.

Clonality

Polyclonal

Ig Type

Rabbit IgG

Applications

ELISA, WB, IP

Dilutions

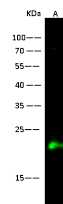
WB: 5-10 $\mu\text{g}/\text{ml}$

ELISA: 0.1-0.2 $\mu\text{g}/\text{mL}$

This antibody can be used at 0.1-0.2 $\mu\text{g}/\text{mL}$ with the appropriate secondary reagents to detect Mouse CSRP1. The detection limit for Mouse CSRP1 is < 0.039 ng/well.

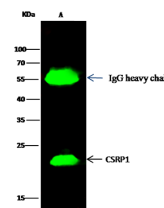
IP: 1-4 $\mu\text{g}/\text{mg}$ of lysate

Validations



Lanes	A
Sample (whole cell lysate)	Hela
Sample volume ($\mu\text{g}/\text{lane}$)	30
Gel	13% SDS-PAGE reducing gel
Recommended Concentration	5-10 $\mu\text{g}/\text{ml}$
Secondary Antibody	Dylight 800-labeled Antibody to Rabbit IgG (FH1), at 1:5000 dilution.
Developed using Odyssey imaging system	
Explanation	Predicted band size : 21 kDa Observed band size : 21 kDa

CSRP1 Antibody, Rabbit PAb, Antigen Affinity Purified, Western blot



Lanes	A
Sample (whole cell lysate)	Hela
Sample quantity	0.5 mg
IP antibody quantity	2 μg
Protein G agarose	15 μl of 50% Protein G Agarose
Gel	13% SDS-PAGE reducing gel
Primary antibody	mCSRP1 antibody at 5 $\mu\text{g}/\text{ml}$
Secondary antibody	Dylight 800-labeled antibody to rabbit IgG (FH1), at 1:5000 dilution.

CSRP1 Antibody, Rabbit PAb, Antigen Affinity Purified, Immunoprecipitation