

# SLAM/CD150 antibody



Catalog Number: 107588

## Product name

SLAM/CD150 antibody

## Specificity

Human; other species not tested.

## Antibody description

SLAM/CD150 mouse Monoclonal antibody. Positive WB detected in Raji cells, HUVEC cells, Jurkat cells. Observed molecular weight by Western-blot: 80 kDa

## Preparation

This antibody was obtained by immunization of SLAM/CD150 recombinant protein (Accession Number: BC012602). Purification method: Caprylic acid/ammonium sulfate precipitation.

## Formulation

PBS with 0.1% sodium azide and 50% glycerol pH 7.3.

## Storage

Store at -20°C. DO NOT ALIQUOT

## Clonality

Monoclonal

## Ig Type

Mouse IgM

## Applications

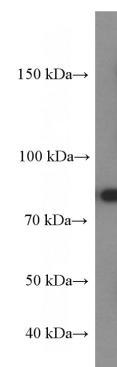
ELISA, WB

## Dilutions

Recommended Dilution:

WB: 1:1000-1:10000

## Validations



Raji cells were subjected to SDS PAGE followed by western blot with Catalog No:107588(SLAMF1 Antibody) at dilution of 1:2000